

BULLETIN 2

38<sup>TH</sup> CHESS OLYMPIAD  
DRESDEN / GERMANY

12 - 25 November 2008

A stylized chess knight logo composed of several overlapping, curved shapes in red, yellow, green, and blue, with a black silhouette of a chess knight's head at the top.

CHESS  
OLYMPIAD  
DRESDEN  
2008



# BULLETIN 2

## OF THE 38<sup>TH</sup> CHESS OLYMPIAD DRESDEN 2008

---

### SECTION A — OLYMPIAD INFORMATION

#### 1. *Official Schedule*

The 38<sup>th</sup> Chess Olympiad Dresden 2008 will take place from 12<sup>th</sup> to 25<sup>th</sup> November 2008 at the

**International Congress Center Dresden (ICD)**  
Ostra-Ufer 2 – D-01067 Dresden – Germany

The official schedule of the 38<sup>th</sup> Chess Olympiad is as follows:

| DAY       | DATE         | ACTIVITY                                       | TIME     |
|-----------|--------------|--|----------|
| Friday    | September 12 | Deadline for Submission of Team Composition    | 11 pm    |
| Wednesday | November 12  | Opening Ceremony                               | 8 pm     |
| Wednesday | November 12  | Arbiters Meeting                               | 10 pm    |
| Wednesday | November 12  | Ranking of Teams                               | 11 pm    |
| Thursday  | November 13  | Captains Meeting                               | 9 am     |
|           |              | Publication of Team Pairings for Round 1       | 9.45 am  |
|           |              | Submission of Round Team List for Round 1      | 10.15 am |
|           |              | Publication of Individual Pairings for Round 1 | 11.45 am |
| Thursday  | November 13  | Round 1  | 3 pm     |
| Friday    | November 14  | Round 2  | 3 pm     |
| Saturday  | November 15  | Round 3  | 3 pm     |
| Sunday    | November 16  | Round 4  | 3 pm     |
| Monday    | November 17  | Round 5  | 3 pm     |
| Tuesday   | November 18  | Free Day                                       |          |
| Wednesday | November 19  | Round 6  | 3 pm     |
| Thursday  | November 20  | Round 7  | 3 pm     |
| Friday    | November 21  | Round 8  | 3 pm     |
| Saturday  | November 22  | Round 9  | 3 pm     |
| Sunday    | November 23  | Round 10                                       | 3 pm     |
| Monday    | November 24  | Free Day                                       |          |
| Tuesday   | November 25  | Round 11 (Last)                                | 10 am    |

## **2.     *Registration***

For all federations the Online Registration was closed 12 July 2008 as was announced in Bulletin 1. Late registrations are still accepted until 12 September 2008.

Please be aware that in cases of late registrations hotel expenses will be charged to the respective Federation.

If you wish to register your teams you are kindly asked to directly contact as soon as possible the responsible Manager Operations Mr Olaf Modrozynski at [olaf.modrozynski@dresden2008.org](mailto:olaf.modrozynski@dresden2008.org), Phone +49 351 488-1638, Fax +49 351 488-1653.

## **3.     *Travel Information***

It is absolutely necessary to update the exact travel details of each participant in the database until 12 September 2008. Otherwise, the Organisers can not guarantee free transport from Dresden Airport as well as from Central Station to the respective hotel!

### Arrival and Departure by Flight:

All participants and delegates are once more requested to book their flights to Dresden on the occasion of the Chess Olympiad as early as possible. There are numerous non-stop connections within the German-speaking region. The inner-German direct connections include nine cities, for instance Frankfurt/Main (FRA), Munich (MUC) and Düsseldorf (DUS).

Dresden International Airport (DRS) is located about nine kilometers north-east of the city centre.

<http://www.dresden-airport.de/en/index.html>

### Arrival and Departure by Train:

The Dresden Main Station is situated next to the city centre. Direct express train connections from the largest German cities and from Poland, the Czech Republic and Austria to Dresden are available.

[http://www.bahn.de/p/view/international/englisch/international\\_guests.shtml](http://www.bahn.de/p/view/international/englisch/international_guests.shtml)

For further information see Annex 1 and 2.

## **4. Accreditation Procedure**

### **4.1 Players, Others and Accompanying Persons**

All registered persons will be provided with a specific accreditation pass according to their function at the Chess Olympiad, which will regulate, among other things, the access to the different venues (Playing Hall, World of Chess, etc.) as well as the ticket for public transportation.

To guarantee an efficient accreditation process the Organisers will set up 3 different accreditation centers at the following places during the announced period:

10 to 12 November 2008

- Dresden Airport – Opening hours 6 am until 12 pm
- Dresden Central Station – 5.30 am until 0.30 am

13 to 25 November 2008

- Congress Center Dresden (playing hall) – 10 am until 6 pm

Participants who will arrive at Dresden Airport or Central Station from 10 to 12 November 2008 will be pleased to follow the signposts to the accreditation center to receive their accreditation directly.

Participants arriving before 10 November 2008 are asked to pick up their accreditation pass from Dresden Central Station during the published opening times.

All arrivals by car are pleased to get accreditation as well at Dresden Central Station.

In case that complete teams will arrive at the same time the team captain is responsible to contact the staff of the accreditation center to get the accreditation for the whole team!

If you have any questions to the accreditation, please feel free to contact Mr Olaf Modrozynski at [olaf.modrozynski@dresden2008.org](mailto:olaf.modrozynski@dresden2008.org); Phone +49 351 488-1638; Fax +49 351 488-1653.

## ***4.2 Photos***

In consideration of the fact that many of the provided pictures are not suitable for the accreditation the Organisers will demand new pictures. Please be aware, if your Federation has not provided adequate pictures until the 12 September 2008 you may have to face delays at the accreditation centers.

## ***4.3 Lost and Stolen Accreditation Cards***

Accredited persons are responsible for their own accreditation card.

In the event that an accreditation card has been lost or stolen the card holder must contact the accreditation center staff during the respective opening hours to report the loss. Replacement cards may be obtained for a charge of 100 Euro, as services are provided using the card.

Upon the usage of the accreditation card the holder agrees to the terms and conditions of the Chess Olympiad. Accreditation cards remain property of the Organising Committee and can be confiscated at any time.

## ***4.4 Press***

Please note that all persons registered as “Press” for their respective Federation who want to apply for a specific press accreditation under the quota of the National Federation will be requested to register additionally under the following link:

<http://www.dresden2008.org/english/registration/press.php>

Our press department will check the applications accurately and will decide about the awarding of the specific press accreditation under solemn authority.

The issuance of press accreditations will take place at the Press Center at the International Congress Center open 11 to 25 November 2008.

Mr Klaus Lais will serve as Press Contact Officer for all press issues. Please do not hesitate to directly contact him at [klais@dresden.de](mailto:klais@dresden.de); Phone +49 351 488-2440; Fax +49 351 488-2332.

## ***5. Accommodation***

The Organising Committee is aiming at providing all participants with desired hotel categories. However, individual cases may require a shifting of categories for capacity reasons. We would like to emphasize that room upgrades from double/twin rooms to single rooms, extended stays due to early arrival or late departure or bookings of rooms for accompanying persons who are not eligible participants in the Olympiad and bookings of amenities must be paid in full before the

arrival in Dresden as, otherwise, they may not be confirmed. You will receive a respective invoice in due time. By no later than 31 October 2008 you will be informed bindingly of the hotel you have been assigned to.

For the usage of hotel amenities you are asked to provide your Credit Card number upon hotel check-in. According to German non-smoker protection law all rooms will be offered as non-smoking rooms.

For additional information on hotels, accommodation, room distribution plans and specifications on prices please review Bulletin 1 §7, §8 and §9 and Annex 3 and 4.

## **6.     *Catering***

The first official catering for Olympiad participants is to proceed at the official “Get Together” following the Opening Ceremony, 12 November 2008, at the Freiburger Arena.

### **6.1. *Breakfast/Brunch***

Each day will begin with a lovely breakfast and brunch buffet at your hotel.

### **6.2 *Dinner***

Subsequent to your game you may visit the „World of Chess“. Besides the playing hall this will be the second central Olympiad venue. In a location with international flair you can not only enjoy dinner but also meet players, visitors and the Dresden population for daily changing arrangements such as exhibitions and fashion shows featuring chess.

### **6.3 *Special Needs***

For reasons of best possible conditions and individual catering guests are asked to please inform the organizers of possible distinctions regarding meals, for example due to allergies. Please indicate such in the field *Comments* on the tournament registration website.

## **7.     *Special Offer for Accompanying Persons***

For accompanying persons who are not participating in the Olympiad we guarantee special offers for meals and public transportation for the duration of the event.

Prices are as follows:

| Hotel Category | Brunch  | Dinner  | Transportation | Entrance | Full Package |
|----------------|---------|---------|----------------|----------|--------------|
| Premium        | 20,00 € | 20,00 € | 3,50 €         | 9,50 €   | 43,50 €      |
| First          | 17,00 € | 20,00 € | 3,50 €         | 9,50 €   | 40,50 €      |
| Comfort        | 15,00 € | 20,00 € | 3,50 €         | 9,50 €   | 38,50 €      |

All Prices are quoted per day and guest. Olympiad entry is included upon purchase of a minimum of two services (Brunch and Transport, Dinner and Transport, Brunch and Dinner etc.). Bookings can be conducted at [www.dresden2008.de](http://www.dresden2008.de) starting 12 September 2008.

## **8. Visa Information**

As already provided in the Zero Bulletin and Bulletin 1 please see again detailed visa information at Annex 5 and apply for visa as soon as possible.

The Organisers would like to underline that visa procedures are the responsibility of the applying person/s. The Organisers would also like to stress strongly that no visas will be issued at the German passport control and all documentation has to be prepared beforehand.

## **9. Opening Ceremony**

The Opening Ceremony of the 38<sup>th</sup> Chess Olympiad will take place 12 November 2008 at 8.08 pm at the Freiburger Arena nearby the International Congress Center. Players from all participating nations, high ranking guests from politics, culture, economy as well as numerous Dresden citizens will attend and enjoy an extraordinary evening of shows and performances with regional and international artists. The following "Get Together" with guests and organisers of the Olympiad, including catering, will harmonically end this special evening. We would appreciate you to be part of this event and to rejoin the hospitality of the Dresden people.

## **10. Cultural Programme and Collateral Chess Tournaments**

An extensive programme of cultural activities and collateral tournaments will be offered during the Olympiad. These will be specified in the next Bulletin.

For further information on chess events and for online registration please refer to the official Olympiad website [www.dresden2008.org](http://www.dresden2008.org).

## **11. Organising Structure and contact details**

President of the Organising Committee is Winfried Lehmann, Mayor of the City of Dresden.

For further information see Annex 6.

## SECTION B — 79<sup>TH</sup> FIDE CONGRESS

### 12. *Date and Venue*

The 79<sup>th</sup> FIDE Congress will be held in Dresden from 16 to 26 November 2008 at the venue of the 38<sup>th</sup> Chess Olympiad as follows:

**International Congress Center Dresden (ICD)**  
Ostra-Ufer 2 – D-01067 Dresden – Germany

### 13. *Timetable*

| Date             | Day       | Duration    | Event                         |
|------------------|-----------|-------------|-------------------------------|
| 16 November 2008 | Sunday    |             | Arrival                       |
| 17 November 2008 | Monday    |             | FIDE Committees & Commissions |
| 18 November 2008 | Tuesday   |             | FIDE Committees & Commissions |
| 19 November 2008 | Wednesday |             | FIDE Committees & Commissions |
| 20 November 2008 | Thursday  | all day     | Executive Board               |
| 21 November 2008 | Friday    | all day     | Executive Board               |
| 22 November 2008 | Saturday  | a.m. & p.m. | Continental Meetings          |
| 23 November 2008 | Sunday    | a.m. only   | FIDE General Assembly         |
| 24 November 2008 | Monday    | all day     | FIDE General Assembly         |
| 25 November 2008 | Tuesday   | a.m. only   | FIDE General Assembly         |
| 26 November 2008 | Wednesday |             | Departure                     |

Please find enclosed the timetable as approved by FIDE (Annex 7).

### 14. *Languages*

English will be the official language of the Congress. At the General Assembly translations from and into Russian and Spanish are available.

### 15. *Registration*

Participants of the Congress will be registered by their Federation using the same system as the players. Delegates are asked to register before **12 September 2008** as special offers on hotel rates will not be guaranteed thereafter. Information on accreditation may be found in Section A §6 “Accreditation Procedure”.

### 16. *Accommodation for Congress Participants*

The official FIDE-Congress Hotel will be the Hotel West Inn Bellevue (Premium category).



The costs for night and breakfast at the official FIDE-Congress Hotel are:

- Single room                      120,00 € per night and person
- Double room                      75,00 € per night and person

Please note that this special offer is only available from 16 to 26 November 2008. This offer is only valid for registrations no later than **12 September 2008**. Invoices will be sent to the respective Federations. Payments must be made within four weeks of reception of the invoice.

## SECTION C — TOURNAMENT REGULATIONS

According to a decision made by the Athens Presidential Board Meeting in June 2008 all participating federations are required to submit their Team Lists by providing the Fixed Board Order (FBO) before 12 September 2008. After this date, no substitution of players and no change of board order shall be allowed.

Any team whose captain (or deputy) is not present at the Captains Meeting will be excluded from the initial ranking of teams and shall not be paired for Round 1. Teams arriving with less than 2 players will not be paired.

If any specific Round Team List (RTL) is not submitted on time, the team must only use its top 4 players.

The order of the players, as indicated by the FBO (Fixed Board Order) Team List cannot be altered; hence reserves must play on the bottom board only.

If the board order in which a team plays differs from the board order of FBO Team List, the team's score for that round shall be reduced by one game point for every deviation from the correct sequence. (Example: for playing 1-2-4-3, two points are forfeited; the score shall not, however, be reduced below zero.) The use of any player who does not figure in the FBO Team List will cause the round to be forfeited 4:0.

**For further important Tournament Regulations see Annex 8 as provided by Chief Arbiter Ignatius Leong.**

## ANNEXES

### ANNEX 1 ARRIVAL AND DEPARTURE

At the arrivals and departures shuttle busses are provided to take Olympiad participants to their hotels from Dresden airport and the Central Station. To avoid delays after your arrival you are requested to please specify your arrival times, means of transport and flight/train numbers in your registration profile. Please assure to provide reliable data and submit the relevant information to the Organising Office as soon as possible. This will guarantee a fast and smooth conveyance.

On the arrival day shuttle busses taking accredited guests from their hotels to the venue of the Opening Ceremony and back are to be arranged.

### ANNEX 2 PUBLIC TRANSPORTATION IN DRESDEN

For ecological reasons and according to the economical principles of the Chess Olympiad in Dresden for the first time in Olympiad history transportation for tournament participants and officials will be realized through public transportation systems, excluding the arrival and departure days. Hence, special Olympiad transportation tram lines will be installed to circulate between relevant player's hotels, the playing venue and further points of interest of the Chess Olympiad 2008.

With the accreditation pass each person receives a ticket allowing the usage of the Olympiad lines for the duration of the tournament. In addition, regular tram and bus lines in the City of Dresden may be used as well. This leaves you the opportunity to move around and explore the city according to your own wishes.

Each participant will be given a timetable for "his/her" Olympiad line to guarantee a convenient and on time approach of the hotel, the playing venue and other Olympiad points of interest. Thus, a punctual arrival at the International Congress Center is ensured and games can begin at exactly 3 pm. Afterwards, all accredited persons will easily reach the "World of Chess" location via the Olympiad line and from there also the individual hotels.

## ANNEX 3 HOTELS

As was stated in Bulletin 1 the following official hotels of the Olympiad will be used to accommodate the participants:

### Premium Hotels

- Hotel Westin Bellevue
- Hotel Maritim

### First Class Hotels

- Steigenberger Hotel Dresden-Radebeul
- Four Points by Sheraton Königshof Dresden
- Ramada Hotel Dresden
- Art`otel Dresden
- Hotel Elbflorenz
- Residenz Alt Dresden.

### Comfort Class

- IBIS Hotels Dresden



IBIS Hotels Dresden



Steigenberger Parkhotel Radebeul



Maritim Hotel Dresden

## ANNEX 4 MAP



### Overview:

1. Congress Center Dresden (Playing Hall)
2. Hotel Maritim
3. Hotel Westin Bellevue
4. Museum Japanese Palais
5. Art'otel
6. Freiburger Arena (Opening Ceremony)
7. Hotel Elbflorenz
8. Stadtmuseum
9. World of Chess (Meeting Square, Central location for dinner)
11. Ibis Hotel Königstein
12. Ibis Hotel Lilienstein
13. Ibis Hotel Bastei

Note: Hotels not indicated here are outside the scope of the map.

## ANNEX 5 VISA

EU nationals do not require a visa to enter the Federal Republic of Germany. Generally speaking, all other foreigners require a visa for stays in Germany. A visa is not required for semi-annual visits of up to three months for nationals of those countries for which the European Community has abolished the visa requirement.

Nationals being in need for visa to enter Germany are required to contact the respective German embassy or consular section being responsible for your country. A list of those countries can be found on the website of the German Foreign Office under:

<http://www.auswaertiges-amt.de/diplo/en/WillkommeninD/EinreiseUndAufenthalt/StaatenlisteVisumpflicht.html>

Visas are issued by the mission responsible for the area in which the applicant has his/her ordinary residence or domicile.

At the moment, the Organisers are sending out invitation letters to the Federations that have requested them upon registration. After the reception of the invitation letter the Federation should contact the respective German embassy or consular section being responsible for the country immediately.

The Organisers would like to underline that visa procedures are the responsibility of the applying person/s. In any case but in particular in the case of late registration or failing respective procedures the Organisers are not responsible for the participant's visas. The Organisers will be glad to assist if questions on Visa procedures should apply.

The Organisers would also like to stress strongly that no visas will be issued at the German passport control and all documentation has to be prepared beforehand.

## ANNEX 6 ORGANISING STRUCTURE AND CONTACT DETAILS

President OC - Mr Winfried Lehmann (Mayor, City of Dresden)

Managing Director - Mr Jörn Verleger

Chairman - Dr Dirk Jordan

Marketing Director - Mr Volker Bernardi

Schacholympiade 2008 – Chess Foundation GmbH  
Kreuzstrasse 6, D - 01067 Dresden  
Germany

Phone: +49 351 488-1665  
Fax: +49 351 488-2858

[www.dresden2008.org](http://www.dresden2008.org)

E-Mail: [info@Dresden2008.org](mailto:info@Dresden2008.org)

Bank account: (Please indicate name of bank account holder as shown below)

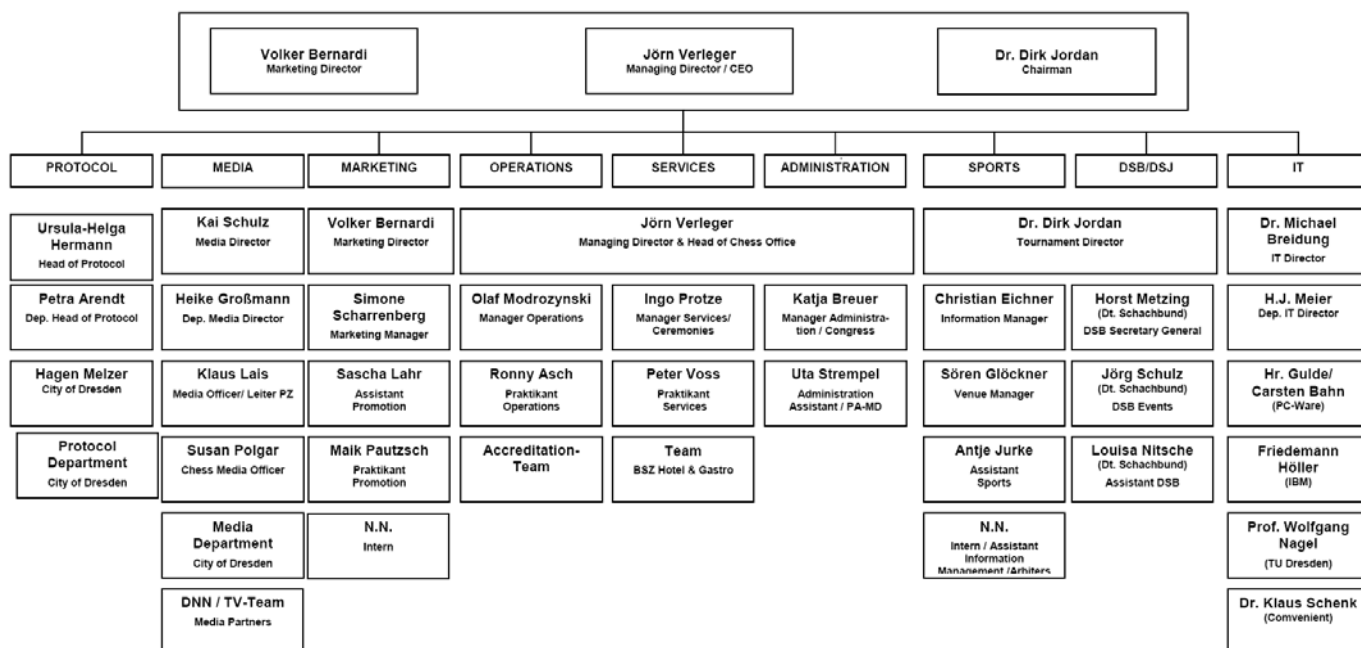
Bank account holder: "Schacholympiade 2008 – Chess Foundation GmbH"

Bank name: Ostsaechsische Sparkasse Dresden

Bank number / BLZ: 31 56 000 000 / 850 503 00

IBAN: DE14 8505 0300 3156 000 000

BIC: BIC OSDDDE81





## ANNEX 7

| Committee/Commission                             | PAX | 17.11.2008  |             |             |             | 18.11.2008  |             |             |             | 19.11.2008  |             |             |             |
|--|-----|-------------|-------------|-------------|-------------|-------------|-------------|-------------|-------------|-------------|-------------|-------------|-------------|
|  |     | 09:00-11:00 | 11:00-13:00 | 15:00-17:00 | 17:00-19:00 | 09:00-11:00 | 11:00-13:00 | 15:00-17:00 | 17:00-19:00 | 09:00-11:00 | 11:00-13:00 | 15:00-17:00 | 17:00-19:00 |
| TITLES AND RATINGS COMMITTEE                     | 40  | M           | M           |             |             |             |             |             |             |             |             |             |             |
| RULES and TOURNAMENT Regulations COMMITTEE       | 20  |             |             |             |             |             |             | M           | M           |             |             |             |             |
| SWISS PAIRINGS COMMITTEE                         | 10  |             |             | M           |             |             |             |             |             |             |             |             |             |
| YOUTH AND JUNIOR EVENTS COMMIT.                  | 20  |             | M           |             |             |             |             |             |             |             |             |             |             |
| COMMITTEE ON WOMEN'S CHESS                       | 15  |             |             |             |             |             |             | M           |             |             |             |             |             |
| ORGANIZERS COMMITTEE                             | 20  |             |             |             | M           |             |             |             |             |             |             |             |             |
| COMPUTER and INTERNET CHESS COMMITTEE            | 5   |             |             | M           |             |             |             |             |             |             |             |             |             |
| ARBITERS COUNCIL                                 | 30  |             |             |             |             | M           | M           |             |             |             |             |             |             |
| CACDEC   | 50  |             |             |             |             | M           | M           |             |             |             |             |             |             |
| COMMITTEE on CHESS ART, EXHIBITION and PHILATELY | 10  |             |             |             | M           |             |             |             |             |             |             |             |             |
| CHESS IN SCHOOLS COMMITTEE                       | 50  | M           |             |             |             |             |             |             |             |             |             |             |             |
| COMMITTEE ON INTERNATIONAL ORG.                  | 5   |             |             | M           |             |             |             |             |             |             |             |             |             |
| TRAINERS COMMITTEE                               | 20  |             |             |             |             |             |             |             | M           |             |             |             |             |
| CHIPS  | 10  |             | M           |             |             |             |             |             |             |             |             |             |             |
| QUALIFICATION COMMISSION                         | 50  |             |             |             |             |             |             |             |             |             |             | M           | M           |
| TECHNICAL COMMISSION                             | 10  |             |             |             |             |             |             |             |             |             | M           |             |             |
| CHESS EVENTS COMMISSION                          | 20  |             |             |             |             |             |             |             |             |             |             | M           |             |
| DEVELOPMENT COMMISSION                           | 50  |             |             |             |             |             |             |             |             | M           | M           |             |             |
| VERIFICATION COMMISSION                          | 10  |             |             |             |             |             |             | M           |             |             |             |             |             |
| MEDICAL COMMISSION                               | 30  |             |             |             |             |             |             |             |             |             |             |             | M           |
| SPECIAL COMMISSION                               | 15  |             |             |             |             |             |             |             |             |             |             |             | M           |
| COMMITTEE ON INTEL. PROPERTY RIGHTS              | 5   |             |             |             | M           |             |             |             |             |             |             |             |             |
| ETHIC COMMISSION                                 | 10  |             |             |             |             |             |             |             |             | M           |             |             |             |
| CONSTITUTIONAL COMMITTEE                         | 5   |             |             |             |             |             |             |             |             |             | M           |             |             |
| CHESS FOR THE DISABLED                           | 15  | M           |             |             |             |             |             |             |             |             |             |             |             |
| COMMISSION FOR CHESS COMPOSITION                 | 5   |             |             |             |             |             |             |             |             | M           |             |             |             |

|                                 | PAX | 20.11.2008  |             |             |             | 21.11.2008  |             |             |             | 22.11.2008  |             |             |             |
|---------------------------------|-----|-------------|-------------|-------------|-------------|-------------|-------------|-------------|-------------|-------------|-------------|-------------|-------------|
|                                 |     | 10:00-11:00 | 11:00-13:00 | 15:00-17:00 | 17:00-19:00 | 10:00-11:00 | 11:00-13:00 | 15:00-17:00 | 17:00-19:00 | 10:00-11:00 | 11:00-13:00 | 15:00-17:00 | 17:00-19:00 |
| EXECUTIVE BOARD                 | 100 | M           | M           | M           | M           | M           | M           |             |             |             |             |             |             |
| PRESIDENTIAL BOARD              | 25  |             |             |             |             |             |             |             |             | M           |             |             |             |
| CONTINENTAL MEETING EUROPE      | 60  |             |             |             |             |             |             |             |             | M           |             |             |             |
| CONTINENTAL MEETING AMERICAS    | 40  |             |             |             |             |             |             |             |             |             | M           | M           |             |
| CONTINENTAL MEETING ASIA        | 40  |             |             |             |             |             |             |             |             |             |             | M           |             |
| IBEROAMERICAN CHESS ASSOCIATION | 25  |             |             |             |             |             |             |             |             |             |             |             | M           |
| CONTINENTAL MEETING AFRICA      | 25  |             |             |             |             |             |             |             |             |             |             | M           |             |

|                    | PAX | 23.11.2008  |             |             |             | 24.11.2008  |             |             |             | 25.11.2008  |             |             |             |
|--------------------|-----|-------------|-------------|-------------|-------------|-------------|-------------|-------------|-------------|-------------|-------------|-------------|-------------|
|                    |     | 10:00-11:00 | 11:00-13:00 | 15:00-17:00 | 17:00-19:00 | 10:00-11:00 | 11:00-13:00 | 15:00-17:00 | 17:00-19:00 | 10:00-11:00 | 11:00-13:00 | 15:00-17:00 | 17:00-19:00 |
| EXECUTIVE BOARD    | 100 |             |             |             |             |             |             |             |             |             |             |             |             |
| PRESIDENTIAL BOARD | 22  |             |             |             |             |             |             |             |             |             |             |             |             |
| GENERAL ASSEMBLY   | 300 | session     |             |             |             | session     |             |             |             | session     |             |             |             |

## ANNEX 8 TOURNAMENT REGULATIONS

AS PROVIDED BY CHIEF ARBITER IGNATIUS LEONG

### 1. Important Deadlines

| DAY       | DATE         | ACTIVITY                                       | TIME     |
|-----------|--------------|--|----------|
| Friday    | September 12 | Deadline for Submission of Team Composition    | 11 pm    |
| Wednesday | November 12  | Opening Ceremony                               | 8 pm     |
| Wednesday | November 12  | Arbiters Meeting                               | 10 pm    |
| Wednesday | November 12  | Ranking of Teams                               | 11 pm    |
| Thursday  | November 13  | Captains Meeting                               | 9 am     |
|           |              | Publication of Team Pairings for Round 1       | 9.45 am  |
|           |              | Submission of Round Team List for Round 1      | 10.15 am |
|           |              | Publication of Individual Pairings for Round 1 | 11.45 am |
| Thursday  | November 13  | Round 1  | 3 pm     |
| Friday    | November 14  | Round 2  | 3 pm     |
| Saturday  | November 15  | Round 3  | 3 pm     |
| Sunday    | November 16  | Round 4  | 3 pm     |
| Monday    | November 17  | Round 5  | 3 pm     |
| Tuesday   | November 18  | Free Day                                       |          |
| Wednesday | November 19  | Round 6  | 3 pm     |
| Thursday  | November 20  | Round 7  | 3 pm     |
| Friday    | November 21  | Round 8  | 3 pm     |
| Saturday  | November 22  | Round 9  | 3 pm     |
| Sunday    | November 23  | Round 10                                       | 3 pm     |
| Monday    | November 24  | Free Day                                       |          |
| Tuesday   | November 25  | Round 11                                       | 10 am    |

| DEADLINES FOR EVERY ROUND          |                         | ROUND 11                |
|------------------------------------|-------------------------|-------------------------|
| Publication of Team Pairings       | Previous day @ 9 pm     | Previous day @ 9 pm     |
| Submission of Round Team List      | Between 9 am to 9.30 am | Previous day @ 9.30 pm  |
| Publication of Individual Pairings | 11 am                   | Previous day @ 10.30 pm |

<http://www.dresden2008.org/english/registration/press.php>



## **2. Team Compositions**

- 2.1 According to a decision made by the Athens Presidential Board Meeting in June 2008 all participating federations are required to submit their Team Lists by providing the Fixed Board Order (FBO) before 12 September 2008. After this date, no substitution of players and no change of board order shall be allowed.
- 2.2 Any team whose captain (or deputy) is not present at the Captains Meeting will be excluded from the initial ranking of teams and shall not be paired for Round 1. Teams arriving with less than 2 players will not be paired.
- 2.3 If any specific Round Team List (RTL) is not submitted on time, the team must only use its top 4 players.

The order of the players, as indicated by the FBO (Fixed Board Order) Team List cannot be altered; hence reserves must play on the bottom board only.

If the board order in which a team plays differs from the board order of FBO Team List, the team's score for that round shall be reduced by one game point for every deviation from the correct sequence. (Example: for playing 1-2-4-3, two points are forfeited; the score shall not, however, be reduced below zero.) The use of any player who does not figure in the FBO Team List will cause the round to be forfeited 4:0.

## **3. Players and Captains**

- 3.1 Metallic objects, electronic devices and mobile phones cannot be brought into the playing area.
- 3.2 Captains and Players playing in a particular round shall be allowed to enter the playing area provided they wear the appropriate Accreditation Badge.
- 3.3 The player having to move is not allowed to leave the playing area without permission of the Match Arbiter.
- 3.4 Players are not allowed to leave the playing venue without permission from the Match Arbiter. The playing venue is defined as the playing area, rest rooms, refreshment area and other places as designated by the Chief Arbiter.
- 3.5 All players must conduct themselves in accordance with sporting fairness and decency, and must take care neither to distract nor to annoy their opponents. They should endeavor to settle all disputes by mutual accommodation.
- 3.6 Draws are NOT allowed before the completion of Black's 30<sup>th</sup> move. This shall be superseded by Article 9.1 of the Laws of Chess. In case of doubts, the Chief Arbiter's interpretation shall be final and without appeal.
- 3.7 No analysis is permitted in the playing area. Analysis for finished games is allowed in the analysis room. It is not allowed to move sets and clocks from playing area to the analysis room.
- 3.8 Prior agreement between players as to the result of individual games or of a match shall be penalized with the utmost severity. If any such agreement is proven to have

taken place, the points apportioned by it shall be annulled and the matter shall be referred to the Appeals Committee for the fixing of the penalty.

#### **4. Captains**

In the exercise of his functions the Captain has the right of access to the area reserved for the players, but it is his duty to ensure that the members of his team who are not involved in the current match or have finished their games do not enter or remain in this area. When the match of his/her team has finished, the Captain will be considered as a spectator and he/she will leave the playing area.

At the end of the playing session, the Captain is responsible both for reporting the result to the Match Arbiter and for delivering to them legibly written score sheets of the finished games and to sign the Match Protocols.

During the games the Captain must refrain from interfering in any way. He is, however, entitled to advise his players on the offering or accepting of draws or resigning of games, provided that he makes no comment on the actual position on the chess board, and confines himself to giving brief information which can in no way be construed as an opinion about the progress of the game. The exchange of information between Captain and Player must take place in the presence of an Arbiter.

The Captain is permitted to appoint a deputy to exercise his functions, but must inform the Chief Arbiter of this in writing.

In matters relating directly to the play, the Captain alone is entitled to lodge or present demands made by his players.

#### **5. The Advisory Panel**

5.1 In the Chief Arbiter's initial discussion with the captains, the latter shall elect an Advisory Panel.

5.2 This panel shall be composed of 5 persons, as follows:

- the members may be Captains or Players;
- they should be chosen from all 5 rating categories, which are made according to the average rating of each team's 4 highest rated players;
- the 5 members shall nominate their own chairman.

5.3 The task of the Advisory Panel is to give advice to the Chief Arbiter and Tournament Director whenever they request it. Equally, the Appeals Committee or the FIDE President may take advice from the panel before arriving at a decision.

5.4 Request for this advice should be addressed to the chairman of the panel.

#### **6. System of Play**

The basic Swiss pairing system shall be Burstein System in 11 rounds, with one section for the open teams and one section for the women's teams, considered as separate competitions.

Every match shall be played over four boards.

## ***7. Start and Finish of the Sessions***

- 7.1 Five minutes before the start of each round, the Chief Arbiter must announce the approaching start of the session by a double acoustic signal; whereupon all Players are to be seated at their designated matches.
- 7.2 The beginning of the playing session shall be announced by the Chief Arbiter or by a single acoustic signal. At this instant, any Player who is not seated at his/her Match shall be defaulted immediately. Where both Players are absent at the beginning of the playing session, both Players shall lose the game by default.
- 7.3 Once the signal for the start of the round has been given, the clock of the player with the white pieces shall be started by his opponent or an Arbiter.

## ***8. Laws of Chess***

The general FIDE Laws of Chess shall be applied with their supplements and interpretations as laid down by the FIDE Rules Commission. The specific regulations for the Chess Olympiad in FIDE Handbook shall also be in force.

## ***9. Time Control***

The time control is 40 moves in 90 minutes and 30 minutes to finish with an increment of 30 seconds per move starting from the first move.

## ***10. Scoring***

- 10.1 Each team's place in the order of classification shall be decided by the number of Match Points it has scored.
- 10.2 Ties shall be resolved as follows:

The position of teams that finish with the same number of Match Points shall be determined by application of the following tie-breaking procedures in sequence, proceeding from (a) to (b) to (c) to the extent required:

  - (a) by the sum of Sonneborn-Berger Points which are calculated as follows: Match Points of each opponent, excluding the opponent who scored the lowest number of Match Points, multiplied by the number of Game Points achieved against this opponent;
  - (b) by the sum of Match Points of all the team's opponents, excluding the lowest one;
  - (c) by the number of the Game Points scored
- 10.3 For tie-break purposes, a Bye is counted as a drawn match against the team itself, an unplayed match – if the opposing team does not appear on time – is counted as a match won by 3-1.

## **11 Individual Board Prizes**

Players assigned to the same board number in their respective team lists shall be in competition for individual board prizes namely; gold, silver and bronze medals. For the purposes of this award, the player's Performance Rating shall be compared. If the Performance Rating is equal, the tie shall be broken by (a) the number of games, and if this is also equal by (b) the player's Performance Rating after deducting the result against the lowest rated opponent, and if this is also equal by (c) the player's Performance Rating after deducting the results against the two lowest rated opponents and so on.

Only players who have played a minimum of 8 games shall be eligible for Board Prizes.

## **12 Qualification for World Team Championships**

The 3 highest placed teams in the Open Section are entitled to participate in the World Team Championship in Turkey, 2009.

The 5 highest placed teams in the Women's Section are entitled to participate in the Women's World Team Championship in Singapore, 2009.

## **13 Procedure in case of infringement of the rules, disputes and improper conduct**

13.1 In matters relating to the play:

- the initial decision shall be taken by the Arbiters.
- an appeal against this decision may be addressed to the Chief Arbiter.
- the second, provisionally binding decision, shall be taken by the Chief Arbiter.

13.2 In administrative matters

- the initial decision shall be taken by the Deputy Tournament Director.
- an appeal against this decision may be addressed to the Tournament Director.
- the second, provisionally binding decision shall be taken by the Tournament Director.

13.3 Any ruling by the Chief Arbiter or Tournament Director shall take effect immediately; any proceedings which were suspended shall then be resumed.

13.4 Written protests against a decision of the Chief Arbiter or Tournament Director are permissible and shall be settled by an Appeals Committee.

## **14 The Appeals Committee**

14.1 The FIDE President, as the highest executive officer of the Chess Olympiad, shall have the support of an Appeals Committee, of which he himself shall select the three members.

14.2 The President shall appoint one of the members as chairman.

14.3 The following may be the subject of rulings by the appeals committee:

- protests against decisions of the Chief Arbiter or Tournament Director;
- complaints of improper conduct by participants in the Chess Olympiad;
- any other matters which the committee considers important and worth debating.

#### 14.4 Procedure of appeals

Any protest against a decision by the Chief Arbiter or the Tournament Director must be typed and presented to the Appeals Committee in triplicate, together with the sum of 100 Swiss Francs or the equivalent in local currency, as a deposit from the signatory. If the appeal is granted, the sum shall be returned immediately.

Those entitled to lodge appeals are the team captains and the chiefs of delegation. Where appropriate, the appeal may be accompanied by written statements from the witnesses. The deposit must be handed to the chairman of the Appeals Committee. If the appeal is refused, the deposit is forfeited to FIDE. Requests to the Appeals Committee by organizers of the Chess Olympiad may be made without payment.

14.5 Upon submission of the appeal, the committee shall proceed to examine the evidence. For this purpose it may take statements from anyone as required, consult members of the Advisory Panel, and conduct other forms of investigation. The decision of the Appeals Committee should be reached as quickly as possible.

14.6 The Appeals Committee should endeavor to find acceptable solutions in the FIDE spirit. It may resolve disputed issues with or without disciplinary action. In the case of gross unsporting offenses or other misconduct, the following principles apply:

- The Laws of Chess provide for the penalization of players who break the rules; the FIDE interpretations of the laws state that "Arbiters are requested to impose, in cases where clear contravention of moral principles of the game is demonstrated, penalties as severe as the loss of the game".
- If a participant fails to comply with the Laws of Chess or the relevant regulations, disobeys the controllers Assistant Arbiters, commits breaches of chess etiquette or conducts himself improperly inside or outside the tournament building, the following steps may be taken.

#### 14.7 Code of penalties

For minor offences or petty infringements

- admonishment
- correction
- demand for an apology to the offended party.

If a participant fails to make the apology demanded of him, which must be presented to the offended party in writing, the Appeals Committee shall instead impose a fine, the amount of which shall have been stipulated in a postscript to the original verdict.

For serious offences

- written warning
- fine
- conditional or definitive disqualification.

The Appeals Committee shall decide whether an offence is "serious" or "minor". All fines are to be remitted to FIDE through the administrator, who should be notified by the committee.

The Federations shall take responsibility for their players.

### ***15 FIDE Officials and Olympiad Principals***

|                                |   |   |
|--------------------------------|---|---|
| Tournament Director            | - | Dr Dirk Jordan (Germany)  |
| Chief Arbiter                  | - | Mr Ignatius Leong (Singapore)   |
| Deputy Chief Arbiter (Open)    | - | Mr Klaus Deventer (Germany)   |
| Deputy Chief Arbiter (Women)   | - | Dr Michael Shadarevian (Qatar)  |
| Senior Arbiters Open           | - | Ms Sava Kisova (Serbia)<br>Mr Mehrdad Pahlevanzadeh (Iran)<br>Mr Ralph Alt (Germany)<br>Mr Ralf Wadewitz (Germany)  |
| Senior Arbiters Women          | - | Mrs Elisabeta Pohlironiade (Romania)<br>Mrs Carol Jarecki (British Virgin Islands)  |
| Appeals Committee              | - | Mr Jorge Vega (Costa Rica)<br>GM Zurab Azmaiparashvili (Georgia)<br>Prof Vanik Zakarian (Armenia)   |
| Technical Administration Panel | - | Mr Ignatius Leong (Singapore)<br>Mr Almog Burstein (Israel)<br>Mr Werner Stubenvoll (Austria)<br>Mr Christian Krause (Germany)<br>Mr Heinz Herzog (Austria) |