



# 2008

# K O R E A

# O P E N

# C H E S S

# TOURNAMENT

### Schedule:

2008. 11.29(Sat)~2008.12. 5(Fri)

**V e n u e:**

Olympic Park Convention Center, Seoul, Korea

### Format:

### 9 Round Swiss System

Time Limit:

90 minutes + 30 sec FISCHER

**Total Prize Fund :**

USD 31,000

**Organizers: KOREA Chess Federation | Sponsor: SEOUL**



## 1. Organizers

Organized by Korea Chess Federation

## 2. Schedule

29th November: Arrival of Players; Technical Meeting - 17:00; Opening Ceremony and Banquet - 18:00

30th November: City Tour

1st December 09:00 hour, Round 2 - 15:00 hour

2nd December 09:00 hour, Round 4 - 15:00 hour

3rd December 09:00 hour, Round 6 - 15:00 hour

4th December 09:00 hour, Round 8 - 15:00 hour

5th December 09:00 hour, Tie Break - 15:00 hour, Closing Ceremony - 18:00 hour

6th December Departure of Players

## 3. Time Control and Format

9 Round Swiss System (Accelerated); FIDE-rated and titled; Rate of play is 90 minutes for the whole game with 30 seconds increment for every move starting from the first move.

## 4. Net Prizes after 22% tax and 20% Asia-Pacific Grand Prix deductions (Gross Prizes in brackets)

1st \$6,240 (\$10,000); 2nd \$3,744 (\$6,000); 3rd \$2,496 (\$4,000);

4th \$1,872 (\$3,000); 5th \$1,248 (\$2,000); 6th to 9th \$624 (\$1,000) each;

Top Woman: \$624 (\$1,000); Top U2200: \$312 (\$500); Top U2000: \$312 (\$500)

## 5. Entry Fees to be payable by 30th October 2008

GM, WGM, IM, WIM, Over 2400: Free (but a deposit of US\$ 100 is required)

2201 to 2400: US\$ 200 2001 to 2200: US\$ 300 below 2000: US\$ 400

Korea Chess Federation reserves the right to accept and reject all entries especially rated below 2100

## 6. The Venue & Official Hotel

The Venue: Olympic Park Convention Center, Seoul, Korea

Official Hotel: OLYMPIC PARKTEL (5star), Seoul, Korea

Free room and 3 meals on twin-sharing basis for first 40 entries accepted.

## 7. All payments (net of all bank charges) shall be made by 30th October 2008 to

Account Name : Korea Chess Federation

Bankers : Korea Exchange Bank, Seoul

Address : 181, 2-Ka Euljiro, Chung Ku, Seoul 100-793, Korea

Account Number : 630-006504-293

Swift Code : KOEXKRSE





## 8. City tour schedule: 30th November

10:00 am	Departure from hotel
10:40~11:30	Visit to an old palace: Changdeokgung
11:30~12:30	Walk through Cheonggye stream
12:30~13:30	Lunch in Myeong-Dong
14:00~15:30	Visit to traditional folk village
16:00~17:30	Walk around Insa-Dong and shopping for Korean traditional souvenirs
18:00~19:30	Visit to N-Seoul Tower, the highest point in Seoul
20:00 pm	Return to hotel

## 9. Miscellaneous notes

a) Players not present at technical meeting may not be paired 1st round.

All players are kindly requested to attend the opening ceremony on the evening of 29th November which is very important for the tournament organizers.

b) Arrival: Players are advised to use Incheon Airport or Gimpo Airport.

c) Getting to OLYMPIC PARKTEL from airport

Please, note there is no pick up from airport. Players are advised to take airport buses.

From Incheon Airport: Airport Limousine Bus 6006

From Gimpo Airport: KAL Limousine Bus No.5.

Bus fare: about \$9 per person one way.

Taxi fare: about \$100 from Incheon Airport

(Black Taxis are more expensive. Ask taxi driver estimated fare before getting on)

d) Tie Breaks: prizes will be shared, there will be rapidplay play-offs for official winner and trophies.

The exact format of play-off will depend on the number of tied players.

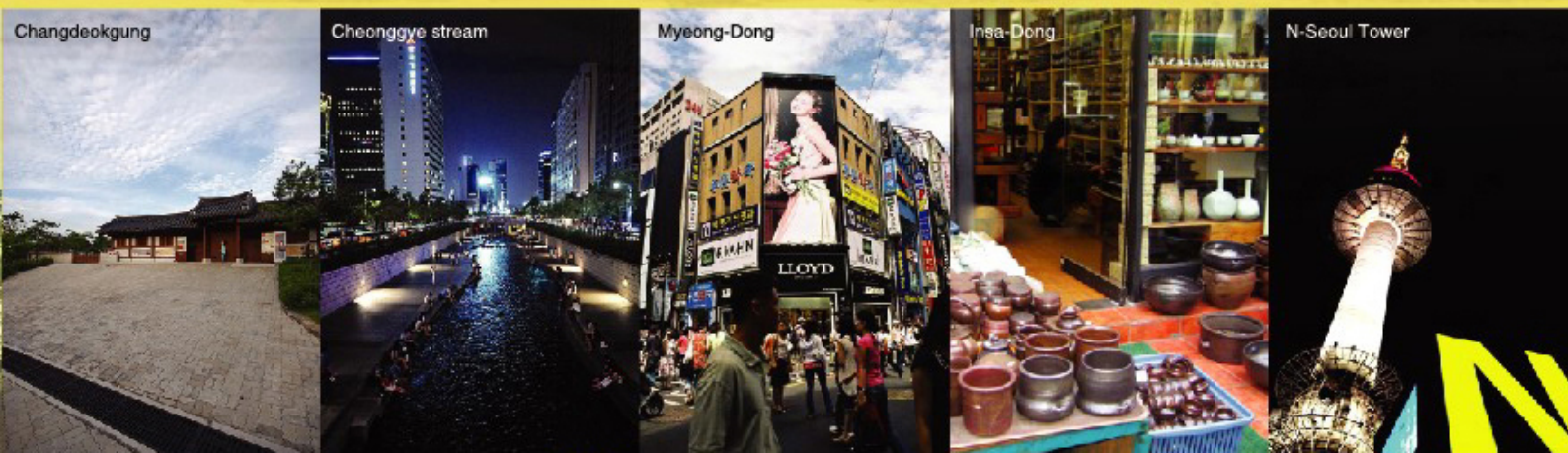
e) Official language of the tournament will be English and Korean.

f) Adjournment: If a game lasts too long the arbiter may adjourn the game so that the players would not miss lunch/dinner. The arbiter will decide the time and place to continue. The players must come to the place at the stipulated time even if they have agreed draw or one of them intends to resign.

## Enquiries to

manager@kchess.or.kr and delegate@kchess.or.kr

FAX: +82 (0)2 515 8378



# 2008 KOREA OPEN CHESS TOURNAMENT

## Registration Form

Name :		
Nationality :		
FIDE ID :	Rating :	Title :
Address :		
Telephone :		
Fax :	E-mail :	
Room Required :	Single	Twin
If sharing, please indicate with whom:		
Arrival Date :	Departure Date :	
Flight No.		
Name of Responding Official		
If any :		

Please return this entry form by **30th October 2008** to the following address

## Korea Chess Federation

or by Fax to : + 82 (0)2 515 8378

or by Email to : [manager@kchess.or.kr](mailto:manager@kchess.or.kr) and [delegate@kchess.or.kr](mailto:delegate@kchess.or.kr)

