



FIDE CHARTER

Time for change

Key points of the reform:

FIDE as a modern democratic organization
that operates according to the IOC principles

Revisions needed to modernize FIDE

Transparency, efficiency and accountability
of all FIDE organs and officials

Clarification of legal acts

Ensuring legal certainty



REASONS FOR THE REFORM



The role of international sports federations is completely different today, as it is our society.



Compliance with International Olympic Committee standards.



We need to move towards a more
MODERN,
TRANSPARENT,
DEMOCRATIC
and EFFICIENT } institution



The laws and rules of our organisation shall make it possible.

KEY POINTS OF THE REFORM



Clarification of the system of FIDE rules and regulations.



Definition of FIDE principles.



Establishment of clear management structures.



Improved role of the independent Elected Commissions.



Improved and updated role of Zonal Presidents.

THE NEW FIDE

GENERAL ASSEMBLY

An organ with the highest authority in FIDE

COUNCIL

A strategic and oversight FIDE body,
with law-making and executive functions

PRESIDENT

An official FIDE representative in all external relations, manages
day-to-day activities

ELECTED
COMMISSIONS

Professional and independent organs for specific FIDE tasks

MANAGEMENT
BOARD

An executive and operational body that assists
the President in the day-to-day management of FIDE activities
(without any legislative competencies)



TRANSPARENCY



1. A vote of no confidence is introduced.

The General Assembly may dismiss elected officials (including the President or the entire Council) with a majority of votes.

17.2 The General Assembly decides on motions of no confidence raised against the President, another member of the Council or the entire Council, with a majority of two thirds of valid votes.

Motions of no confidence can be debated following a proposal supported by a minimum of 65 Member Federations or 7 members of the Council.

65
Member
Federations

TRANSPARENCY



2. Democracy in the Council at a new level

Former version

Less than half of the Presidential Board members were elected independently of the President.

< 50%

Now

More than half of the Council members elected independently of the President

> 50%



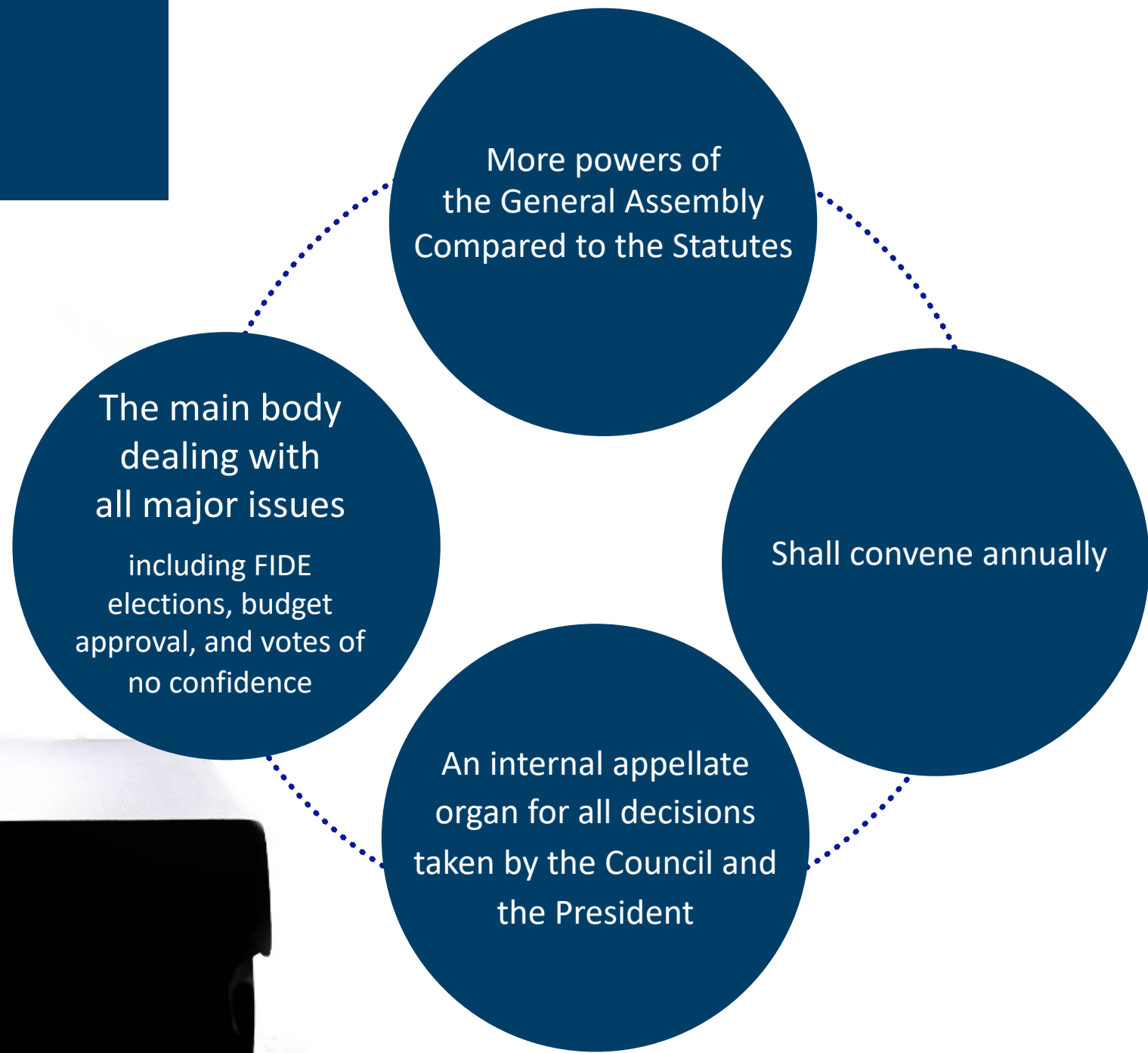
3. The Council appoints Management Board members following the President's proposal.



4. The Treasurer and Secretary of the Council are elected by secret ballots

THE GENERAL ASSEMBLY

New opportunities to advance democracy



THE GENERAL ASSEMBLY

New opportunities to advance democracy

16.6. PROHIBITION to use proxies:

Representation or voting by proxy is never allowed, for any FIDE organ.

17.6. Presidents and delegates may only represent one Member Federation at a time and must have either:

A citizenship or at least two years' residency of the country or territory they represent.

OR

At least one year experience as an office holder of this Member Federation.

They must also be elected or appointed by the appropriate body of that Member Federation.

THE COUNCIL



A strategic and oversight body of FIDE.



Consists of 15 members to facilitate the efficient work process.



Has both executive and legislative functions.

Approves and modifies, by a 2/3 majority of votes, FIDE legal acts

Defines FIDE's mission, strategic direction and policies

Approves a draft of the FIDE budget

Approves, ratifies a number of decisions taken by the President and the Management Board

Supervises activities of non-elected Commissions



Invites current FIDE World Champion and Women's World Champion to its meetings with a right to an advisory vote.

Votes on elections for the members of the Council must be made by

SECRET BALLOT





THE PRESIDENT

A person cannot serve as President for more than
TWO TERMS*

*** including the current term**

1

Represents FIDE officially

2

Signs contracts, assumes obligations for FIDE

3

Maintains good relations between FIDE and
Federations

4

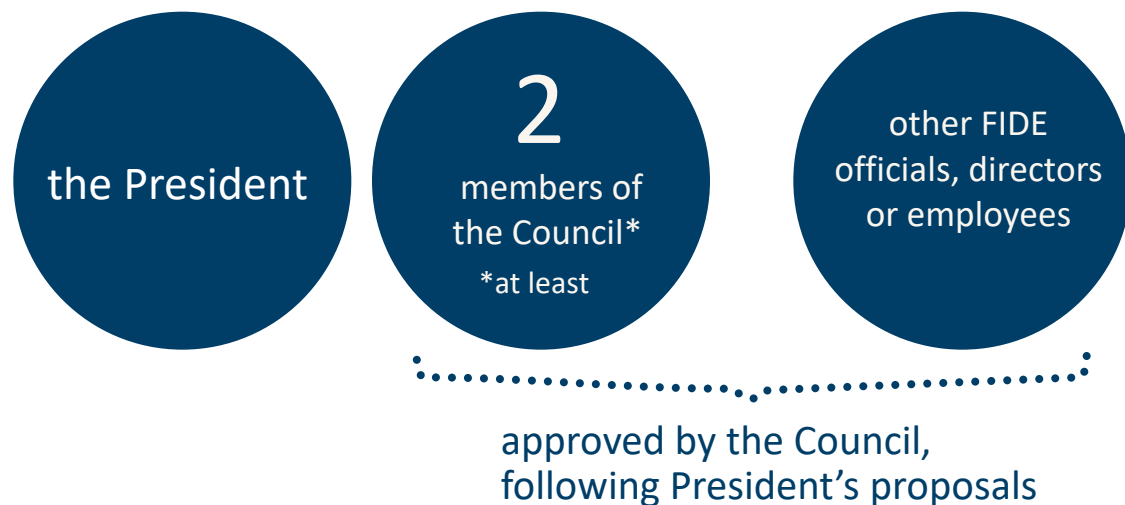
Aims to foster a positive image of FIDE

THE MANAGEMENT BOARD

New organ for numerous ongoing affairs

An executive, operational and administrative body
(without legislative competencies)

- ✓ Assists the President in day-to-day management of FIDE activities.
- ✓ Manages ordinary activities and resources.
- ✓ Coordinates current activities of officials, Commissions, FIDE offices and employees.
- ✓ Implements decisions and attains objectives set by the President and the Council.
- ✓ Monitors and supervises the implementation of decisions taken by the President and the Council.





INDEPENDENCE OF THE ELECTED COMMISSIONS' MEMBERS

Elections of

- ✓ the Chairmen and the members of the Verification Commission (VC),
- ✓ the Chairmen and the members of the Ethics and Disciplinary Commission (EC)
- ✓ the Chairmen and the members of the Constitutional Commission (CC)

are held:

2^{years}
after the other
elections



PROFESSIONALISM OF THE ELECTED COMMISSIONS' MEMBERS

THE CONSTITUTIONAL COMMISSION (hereinafter - CC)

FIDE STATUTES

The CC shall consist
of 5 members
with, if possible,
experience
in the field of
constitutional law.



or



FIDE CHARTER

The Chairman and two members of the CC are elected by the GA among candidates having sufficient practical background and expertise in law and justice

(at least **3** years of experience as judge, or lawyer, or notary, or scholar or professor on legal subject matters, or similar professional experiences).



The other two members are elected by the GA among candidates having sufficient background in the administration of FIDE or of a Member Federation

(at least **6** years of experience as FIDE or Member Federation office bearer).





PROFESSIONALISM OF THE ELECTED COMMISSIONS' MEMBERS

THE VERIFICATION
COMMISSION
(hereinafter -VC)

The VC shall consist of
three members, with
financial experience and
expertise, if possible.

3^{years}
experience
as auditor

or

6^{years}
experience
as FIDE office
bearer

ELECTORAL COMMISSION
(hereinafter - EC)

The EC shall consist of
the Chairman of the CC
and one representative
from each Continent.

The Chairman and the other members of the VC are elected by the GA among candidates having sufficient background and expertise in finances and accounting or in FIDE administration

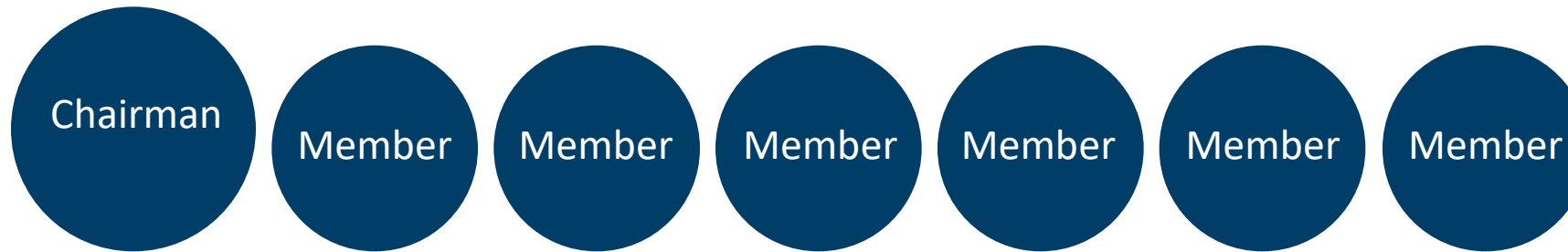
(at least 3 years of experience as auditor in public or private institutions, including sport associations, or as accountant or similar professional experiences, or scholar or professor on financial subject matters, or at least 6 years of experience as FIDE office bearer or Member Federation office bearer).

The EC is composed of three members: the Chairman of the VC, the Chairman of the Ethics and Disciplinary Commission and the Chairman of the CC, each of them was elected by the GA.

THE ETHICS AND DISCIPLINARY COMMISSION

Improved role

Members shall not be re-elected for more than two consecutive terms

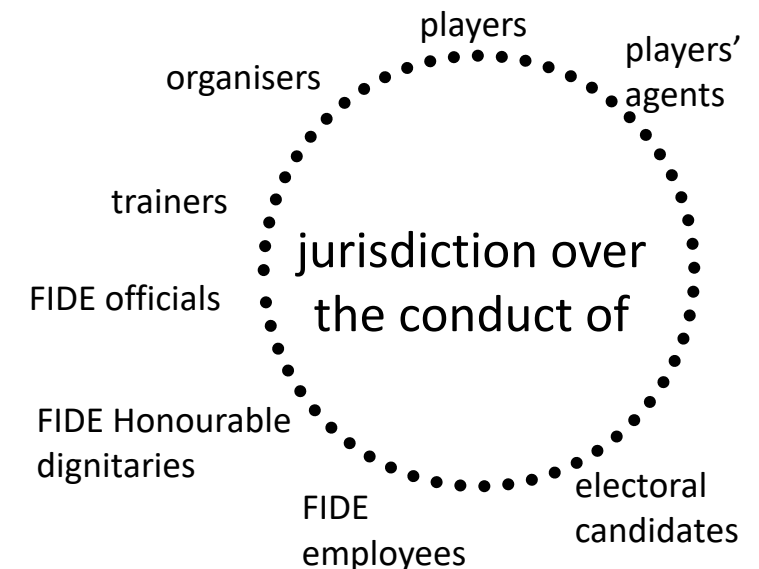


... elected by the GA among candidates ...

... elected by the GA among candidates ...



ethics



CLARIFICATION OF THE SYSTEM OF FIDE RULES AND REGULATIONS



Fixed hierarchy of documents

7.1 The system of FIDE rules and regulations is hierarchically organised as follows:

- FIDE Charter;
- Bylaws, Ethics and Disciplinary Code, Electoral Rules, Financial Rules, Rules on Laws of Chess, Zonal Council Rules, Rules on Non-elected Commissions;
- Regulations;
- Procedural Rules of the EC, of the Fair Play Commission and of the Arbiters' Disciplinary Committee;
- Decisions;
- Internal rules of FIDE organs;
- Recommendations and Guidelines.

7.2 There will be no other rules or regulations in FIDE.



CLARIFICATION OF THE SYSTEM OF FIDE RULES AND REGULATIONS



Mandatory publication on the FIDE website

7.13 All FIDE rules and regulations have to be made available on the FIDE website, on a digitalised version, mentioning clearly the date of their approval and of any changes of them.

Validity from the moment of publication on the FIDE website

7.13. If not differently provided in this Charter or by the competent organs that approved them, new rules and regulations become applicable 15 days after their publication on the FIDE website.



International Chess Federation



15
days

All these measures will help us
to create legal certainty and transparency in FIDE