

WORLD AMATEUR CHESS CHAMPIONSHIP

DÜNYA AMATÖRLER SATRANÇ ŞAMPİYONASI

2011

30 EYLÜL-11 EKİM 2011
30 SEPTEMBER - 11 OCTOBER 2011
ANTALYA/TÜRKİYE



www.fide.org

REGULATIONS / INVITATION

<http://wacc2011.tsf.org.tr>

1. INVITATION

The Government of Turkey and the Turkish Chess Federation (TCF), have the honor to invite all FIDE affiliated Chess Federations throughout the world to participate in The World Amateur Chess Championship 2011 which will take place in Antalya, Türkiye, from 30th September (Arrival) to 11th October (Departure) 2011.

TCF aims to organize an excellent event with your participation.

2. PARTICIPATION

- 2.1 The World Amateur Championship is open to all eligible players registered with their Federation. The participants shall have no FIDE title or published FIDE Rating above 2000 at the start of the tournament nor have had such a Rating for at least 2 years prior to the start of the event.
- 2.2 FIDE member federations shall have the right to send as many players as they wish. The World Amateur Women`s Championship shall be held as part of the World Amateur Championship and female contestants will be eligible to win both titles.
- 2.3 All participants including parents, coaches, observers and relatives are obliged to stay in official hotels. Access to playing areas, venues and the hotels will be allowed only to accredited people by the organization. No participant will be allowed to book directly in the official hotels. All bookings must be through the organizers.
- 2.3.1 Accommodation and travel expenses will be covered from the participants, federations and their Sponsors. Guest players should pay accommodation and organization fee except for Fide fee. Travel arrangements should be made into Antalya Airport (AYT).

3. FIDE ENTRANCE FEES

- 3.1 Entry for the first two nominees of each FIDE member federation shall be free. The entry fee for other players is 30 euro and this shall be collected by the organizer and forwarded to FIDE.

4. REGISTRATION AND TRAVEL

- 4.1 In order to provide appropriate tournament conditions, every participating Federation should complete carefully the official Registration Form (attached to this file) and send it back to the Organizing Committee; any other application method shall not be accepted. The deadline for registration is **01th September 2011**. After this date a penalty of **100 € (Euros)** for each late

registration will be charged to participants till **15th September 2011** latest. After this date, organizers reserve the right to refuse or decline late registrations or charge higher hotel costs for participants.

- 4.2** The registration form must include the *Federation name, the surname, the first name, the FIDE ID, the category(open or women's) and international rating(if available), and the passport details* of every player and every accompanying person. It must also include the name, details and phone number/ address/ fax/ email of the head of the delegation. An identity photo (2x3 cm) must also be sent for each player (guest, additional or qualified) and each accompanying person by **01th September 2011**. The photo can also be taken on arrival at the Hotel.
- 4.3** Each player and each accompanying person must pay to the organizing committee the amount of **100 € (Euros)** at the moment of their registration (**before 01th September 2011**). This payment is compulsory and represents a confirmation of participation. This payment includes transportation from Antalya Airport to hotel, accreditation and identification badges.
- 4.4** TRAVEL DETAILS. The venue is the **Limra (5 Stars) Hotel** in Kemer, Antalya. The venue is 70 km west of Antalya Airport. Antalya is a tourism city very well known, and has a large number of charter flights from main points of Europe. Another way to come to Antalya is via Istanbul.

There are daily 20-30 flights connecting **Istanbul Atatürk Airport** to **Antalya Airport**. On the following web sites you may get more information for domestic flights in Turkey and you may make online registrations. We recommend to our guests to book with Turkish Airlines, and arrive via Istanbul.

<http://www.thy.com/>

<http://www.onurair.com.tr/onurair/>

<http://www.atlasjet.com.tr/>

<http://www.pegasusairlines.com/>

5. PAYMENT

- 5.1** BANK TRANSFERS. When registering for any category, the above mentioned amount of **100 € (Euros)** must be transferred to the following account:

Bank Name	: Turkiye Is Bankasi
Branch Name	: Ankara
Address	: Ulus – Ankara
Account Holder	: Turkiye Satranc Federasyonu
IBAN Euro	: TR500006400000242003881023
SWIFT CODE	: ISBKTRISXXX

All bank commissions should be paid by sender, although even if it is paid by the sender, there is usually a transfer cost on Turkish side (18 € (Euros) for each transfer), this will be charged to sender.

- 5.2** As soon as the payment transfer is confirmed, the organizing committee will send to the respective chess Federation the confirmation of the hotel reservations. Also all confirmed registrations will be declared on the official web site, where Federations may check their participants' situation on a daily basis.
- 5.3** Players will not be paired until all the payments are effected to the organizers.

6. ACCOMMODATION

- 6.1** All inclusive accommodation will be offered in the hotels in Kemer-Antalya booked by the organizing committee. In the hotel there will be free wireless connection in the lobby to all participants.
- 6.2** The accommodation charges must be paid in advance. The payment will be done only in Euros.
- 6.3** All accommodation cost will be paid for 8 nights as a total package plus registration cost for whoever will be coming on the 30th September and leaving on the 11th October. If someone comes later or leaves earlier, they will pay also this cost as a total cost. If any participants will be arriving earlier or leaving later they will pay the difference of the nights mentioned below.

Hotels: ALL INCLUSIVE

Hotel Limra & Limra aparts 5 stars (11 nights)

triple room	60 €/ day per person	660€ + 100€ =	760,00 € total minimum
double room	65 €/ day per person,	715€ + 100€ =	815,00 € total minimum
single room	100 €/ day per person,	1100€ + 100€ =	1.200,00 € total minimum

Rooms will be booked on the principle of **FCFS** (First Come First Served).

All participants are obliged to stay in Official Hotels and bookings must be via Turkish Chess Federation.

7. TECHNICAL REGULATIONS

- 7.1 In the case of the more than 25 woman player participation, the Women's category shall be organize, otherwise, all woman players shall compete in the Open category.
- 7.2 The tournament will be played in Swiss system with 9 rounds.
- 7.3 The game rate will be 90 minutes for 40 moves plus 30 minutes for the rest of the game with an increment of 30 seconds per move starting from move one.
- 7.4 The tie-break methods (respectively) are: Buchholz cut one(the lowest score reduced), Sonneborn-Berger, sum of the progressive scores, numbers of games won.

8. TOURNAMENT SCHEDULE

Friday 30 September 2011		Arrival of Delegations
Saturday 01 October 2011	11:00	Technical Meeting
	15:40	Opening Ceremony
	16:00	1 st Round
Sunday 02 October 2011	16:00	2 nd Round
Monday 03 October 2011	16:00	3 rd Round
Tuesday 04 October 2011	16:00	4 th Round
Wednesday 05 October 2011	Free Day	Free Day
Thursday 06 October 2011	16:00	5 th Round
Friday 07 October 2011	16:00	6 th Round
Saturday 08 October 2011	16:00	7 th Round
Sunday 09 October 2011	16:00	8 th Round
Monday 10 October 2011	11:00	9 th Round
	19:00	Closing Ceremony
Tuesday 11 October 2011		Departure of Delegations

9. BULLETIN

- 9.1 Daily bulletins will be available for sale onsite. Each federation will receive an electronic copy of the entire tournament bulletin and can purchase hard-bound copies upon request. Each national federation must provide e-mail information for the organizers to send the complete electronic bulletin to.

10. TOURNAMENT PUBLICITY

- 10.1** The top 50 boards will be broadcasted live on Tournament Website.
- 10.2** All tournament media and publicity will be coordinated with local and international media via selected media liaison to be named in the future.

11. INFORMATION ABOUT VISAS

Please check the following link for information about visas:
<http://www.mfa.gov.tr/visa-information-for-foreigners.en.mfa>

- 11.1** Federations or participants who need assistance with their visas are asked to contact the Organizing Committee before **01th September 2011**.
- 11.2** The Organization Director will supply official letters of invitation if requested by the participant.

12. WEATHER CONDITIONS

In October, the weather of Antalya is warm and around 30° C, however there may be rain showers during this time. We propose to all participants to have a raincoat and some protective clothing.

13. ELECTRICITY

The standard voltage in Turkey is 220 Volts. The plugs used for appliances are twin round plug.

14. CURRENCY & EXCHANGE

The local currency is the Turkish Lira. At the time of publication exchange rates are :

1€ (Euro) = 2.2972 Turkish Lira (TL) (03 Jun 2011)
1USD (American Dollar) = 1.5858 Turkish Lira (TL) (03 Jun 2011)

15. PRIZES-TITLES

- 15.1** Per FIDE regulations the World Amateur Champion will be awarded the title of FIDE Master with a rating of 2200. The Woman's World Amateur Champion will be awarded the title of Woman FIDE Master with a rating of 2050. The Silver Medal Champion of the Open section will be awarded a FIDE rating of 2100. The Bronze Medal Champion of the Open section will be awarded a FIDE rating of 2050. They awarded with trophies and special medals.
- 15.2** **Total 10,000 € (Euro) prize fund** shall be divided between Open and Women Categories as follows:
(numbers of the players in Women Category) ÷ (numbers of the players in Open Category) X 100 (percent). Principally, Women Category prize amount shall not be lower than 35% of the total prize fund.

15.2.1

Allotted Category Prize			
Rank	Prize	Rank	Prize
1.	25%	5.	10%
2.	20%	6.	7.5%
3.	15%	7.	5%
4.	12.5%	8.	5%

15.2.2 In the case of absence Women Category, 20% of the total prize fund will be allotted to the best woman players and distributed by the table above.

15.2.3 In the case of the equal final scores, money prizes shall be shared between players according to Hort System.

16. APPEALS COMMITTEE

16.1 Before the beginning of the tournament an Appeals Committee shall be selected. This Committee shall consist of three members and two reserves chosen by the place from among themselves or representatives of the national federations present. The persons chosen for the Appeals Committee shall represent five different federations.

No member of the Committee shall have the right to decide on questions concerning his own federation. In such cases the member concerned shall have the right only to partake in the discussions of the Committee.

16.2 A protest against the decision of an Arbiter must be submitted in writing to the Chief Arbiter, within one hours of the original decision. The protest shall be accompanied by 100 euro appeal fee; which shall be returned to the claimant if the appeal is successful.

17. CONTACT INFORMATION

The Director of Tournament: **Mr. Melih SAGIT**

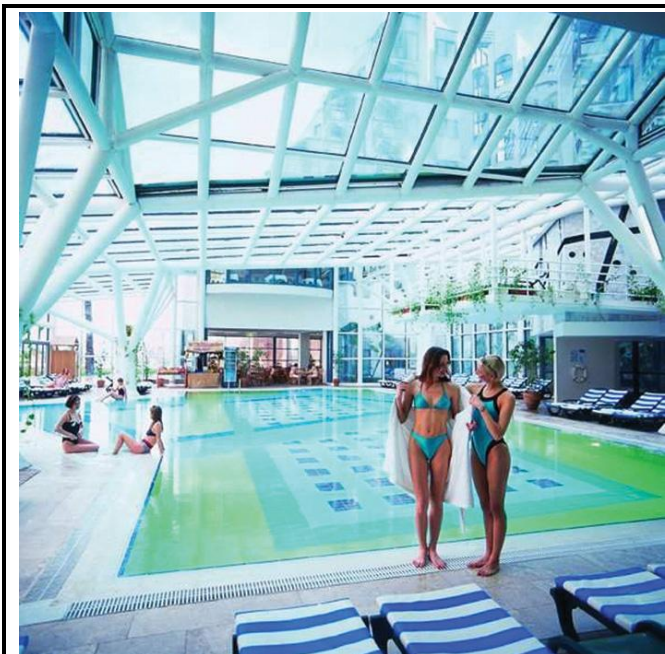
Phone : (+90) 309 75 94 / 119 Fax : (+90) 312 310 96 20

Mobile phone : (+90) 530 640 05 50

E-mail: melihsgt@tsf.org.tr, melihsgt@gmail.com









Tahtalı Mountain

OLYMPOS

This historic city is located between Kemer and Adrasan. After passing Phaselis, a place on the Antalya - Kumluca road, take the Olympos road. Çıralı is an ancient coastal village near Olympos. The city, which was founded in the 2nd century BC, was vacated in the 6th century AD

The famous Bellerophontes - Chimera war took place here. An hour of walking on a narrow and uneven slope above a riverbed after Çıralı will bring you to Chimera's unique natural ambience. Chimera is known by the natives as "Yanartaş" due to continuously burning natural gas, which is coming from the mountain.

Related links about Antalya:

- <http://en.wikipedia.org/wiki/Antalya>
- http://en.wikipedia.org/wiki/Kurşunlu_Waterfall
- <http://en.wikipedia.org/wiki/Phaselis>
- <http://www.tahtali.com/english/>
- <http://en.wikipedia.org/wiki/Aspendos>
- <http://en.wikipedia.org/wiki/Manavgat>
- <http://en.wikipedia.org/wiki/Perga>