

Attendance Sheet

Rules and Tournament Regulations

1 September 2012, 10.00-13.00

Chairman: G. Gijssen (NED)

Present: D. Hamisari (INA), K. Daniel (BAR), M. Fayad (AHO), S. Boyd (FRA), A. Roose (AHO), P. Nimityongskul (THA), K. Msukwa (MAL), O. Solakoglou (TUR), C. Jarecki (IVB), S. Reuben (ENG), W. Brown (USA), H. Karimi (IRI), J. Berglund (PLW), A. Go;ar (TUR), G. Sohhar (EGY), J. Lonea (ARG), A. Vasse (NED), K. Deventer (GER), V. Ranikunar (ACF), A.G. Kweka (GHA), G. Mashala (CGO), S Mabmeza (RWA), S. Kisuze (UGA), A. Surender (SWE), R. Smith (TRI), A. Abou Mesini (LIB), G. Altanoch (MGL), F. Guadalupe (USA), R. Ricca (ITA), N. Ali (MDV), M. Zahiya (MDV), R. Alt (GER), R. Anantharam (IND), B. Jones (GUA), A. Krause (GER), D. De Ridder (BEL), H. Bond (CAN), A. Marghetis (CAN), T. Luther (GER), T. Rich (USA), A. Filipowicz (POL), A. Corfe (ENG), M. Pahlevanzadeh (IRI), S. Stoisavlyevic (SRB), J. Mena (ESP), R. Barrera (ARG), A. Nyaberi (KEN), A. Rateplo (KEN), T. Zaroug (SUD), E. Bashir (SUD), A. Ab Hassan (SUD), Oriov Ali Barre (SUD), S. Abdul Sallam (YEM), T. Al -Saraha (YEM), M. Al-Ahgeri (YEM), G. Unal (TUR), A. Korkyc (AUT), A. Vardapetian (ARM), S. Press (PNG), G. Debessu (ETH).

2 September 2012, 17.00-19.00

Chairman: G. Gijssen

Present: H. Bond (CAN), A. Marghetis (CAN), K. Deventer (GER), K-J. Rist (NOR), A. Rimestad (FAI), J. Lehtivaara (FIN), S. Boyd (FRA), M. Abdulrahim (UAE), R. Alt (GER), S. Press (PNG), B. Jones (GUA), A. Surender (SWE), K. Bonham (AUS), K. Jungwirth (AUT), A. Schuering (NED), C. Jarecki (IVB), R. Ricca (ITA), F. Guadalupe (USA), L. Barnes (ENG), I. Vereschagin (RUS), F. Dapiran (ITA), W. Stubenvoll (AUT), S. Sloan (USA), D. De Ridder (BEL), J. Mena (ESP), A. Brustman (POL), G. Debessu (ETH), M. Solano (CRC), H. Turdialiev (UZB), R. Alsusi (PLE), R. Anantharam (IND), A. Tkachev (RUS), L. Wijesuriya (SRI),

4 September 2012, 09.00-13.00

Chairman: G. Gijssen

Present: P. Pisk (CZE), F. Dapiran (ITA), Hansen (DEN), T. Corfe (ENG), S. Press (PNG), H. Bond (CAN), S. Reuben (ENG), K. Deventer (GER), R. Ricca (ITA), R. Alt (GER), C. Krause (GER), A. Schuering (NED), M. Smith (ISV), P. Nimityongskul (THA), S. Sloan (USA), K. Daniel (BAR), A. Filipowicz (POL), J. Lahtivaara (FIN), A. Tkachev (RUS), C. Jarecki (IVB), D. Jordan (GER), S. Muradian (USA), M. Pahlevanzadeh (IRI), I. Vereschagin (RUS), A. Vasse-DGT (NED), G. Altanoch (MGL), L. Barnes (ENG), W. Brown (USA), K. Bonham (AUS), S. Boyd (FRA), R. Kelathuwe (BOT), D. Buthali (BOT), A. McFarlane (SCO)

FIDE LAWS OF CHESS

Contents:

PREFACE	page 3
BASIC RULES OF PLAY	page 3
Article 1: The nature and objectives of the game of chess	page 3
Article 2: The initial position of the pieces on the chessboard	page 3
Article 3: The moves of the pieces	page 4
Article 4: The act of moving the pieces	page 8
Article 5: The completion of the game	page 9
COMPETITION RULES	
Article 6: The chessclock	page 9
Article 7: Irregularities	page 11
Article 8: The recording of the moves	page 12
Article 9: The drawn game	page 13
Article 10: Quickplay finish	page 14
Article 11: Points	page 14
Article 12: The conduct of the players	page 14
Article 13: The role of the arbiter (see Preface)	page 15
Article 14: FIDE	page 16
APPENDICES	
A. Rapidplay	page 17
B. Blitz	page 18
C. Algebraic notation	page 19
D. Quickplay finish where no arbiter is present in the venue	page 20
E. Rules for play with blind and visually disabled players	page 22
F. Chess960 rules	page 24

G. Adjourned games	page 26
H. Glossary of terms in the Laws of Chess	page 28

FIDE Laws of Chess cover over-the-board play.

The Laws of Chess have two parts: 1. Basic Rules of Play and 2. Competition Rules.

The English text is the authentic version of the Laws of Chess (which was adopted at the 83rd FIDE Congress at Istanbul (Turkey), September 2012 coming into force on 1 July 2013.

In these Laws the words “he”, “him”, and “his” shall be considered to include “she” and “her”.

PREFACE

The Laws of Chess cannot cover all possible situations that may arise during a game, nor can they regulate all administrative questions. Where cases are not precisely regulated by an Article of the Laws, it should be possible to reach a correct decision by studying analogous situations which are discussed in the Laws. The Laws assume that arbiters have the necessary competence, sound judgement and absolute objectivity. Too detailed a rule might deprive the arbiter of his freedom of judgement and thus prevent him from finding a solution to a problem dictated by fairness, logic and special factors. FIDE appeals to all chess players and federations to accept this view.

A member federation is free to introduce more detailed rules provided they:

- a. do not conflict in any way with the official FIDE Laws of Chess, and
- b. are limited to the territory of the federation concerned, and
- c. are not valid for any FIDE match, championship or qualifying event, or for a FIDE title or rating tournament.

BASIC RULES OF PLAY













Article 1: The nature and objectives of the game of chess

- 1.1 The game of chess is played between two opponents who move their pieces on a square board called a “chessboard”. The player with the light coloured pieces (White) makes the first move, then the players move alternately, with the player with the dark-coloured pieces (Black) making the next move. A player is said to “have the move”, when his opponent’s move has been “made”.
- 1.2 The objective of each player is to place the opponent’s king “under attack” in such a way that the opponent has no legal move. The player who achieves this goal is said to have “checkmated” the opponent’s king and to have won the game. Leaving one’s own king under attack, exposing one’s own king to attack and also “capturing” the opponent’s king are not allowed. The opponent whose king has been checkmated has lost the game.
- 1.3 If the position is such that neither player can possibly checkmate the opponent’s king, the game is drawn (see Article 5.2 b).

Article 2: The initial position of the pieces on the chessboard

- 2.1 The chessboard is composed of an 8 x 8 grid of 64 equal squares alternately light (the “white” squares) and dark (the “black” squares).
The chessboard is placed between the players in such a way that the near corner square to the right of the player is white.
- 2.2 At the beginning of the game White has 16 light-coloured pieces (the “white” pieces); Black has 16 dark-coloured pieces (the “black” pieces).

These pieces are as follows:

A white king	usually indicated by the symbol		K
A white queen	usually indicated by the symbol		Q
Two white rooks	usually indicated by the symbol		R
Two white bishops	usually indicated by the symbol		B
Two white knights	usually indicated by the symbol		N
Eight white pawns	usually indicated by the symbol		(P)
A black king	usually indicated by the symbol		K
A black queen	usually indicated by the symbol		Q
Two black rooks	usually indicated by the symbol		R
Two black bishops	usually indicated by the symbol		B
Two black knights	usually indicated by the symbol		N
Eight black pawns	usually indicated by the symbol		(P)

Staunton Pieces



P Q K B N R

2.3 The initial position of the pieces on the chessboard is as follows:



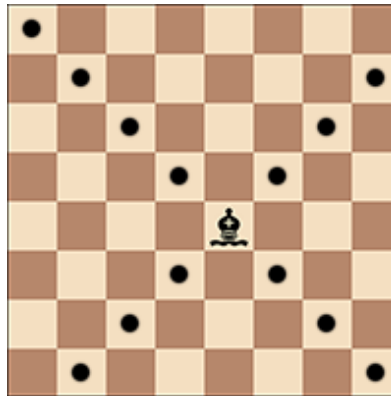
2.4 The eight vertical columns of squares are called “files”. The eight horizontal rows of squares are called “ranks”. A straight line of squares of the same colour, running from one edge of the board to an adjacent edge, is called a “diagonal”.

Article 3: The moves of the pieces

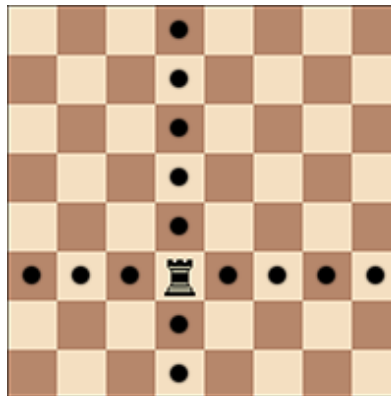
3.1 It is not permitted to move a piece to a square occupied by a piece of the same colour. If a piece moves to a square occupied by an opponent’s piece the latter is captured and removed from the chessboard as part of the same move. A piece is said to attack an opponent’s piece if the piece could make a capture on that square according to the Articles 3.2 to 3.8.

A piece is considered to attack a square, even if this piece is constrained from moving to that square because it would then leave or place the king of its own colour under attack.

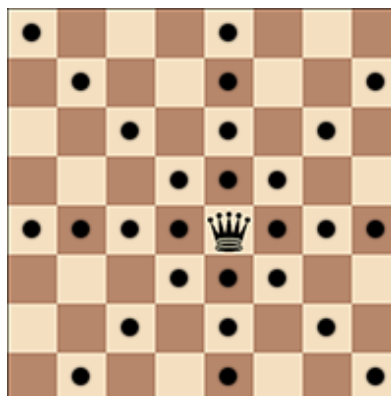
3.2 The bishop may move to any square along a diagonal on which it stands.



3.3 The rook may move to any square along the file or the rank on which it stands.

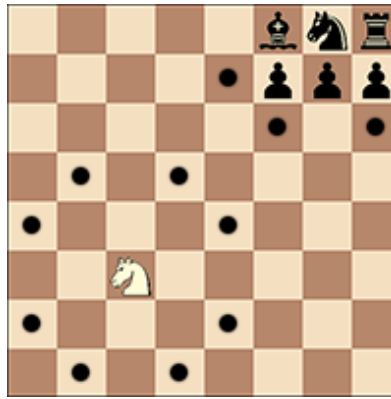


3.4 The queen may move to any square along the file, the rank or a diagonal on which it stands.

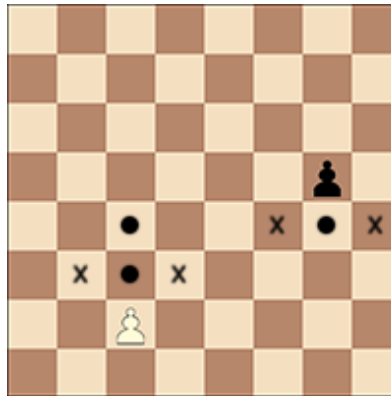


3.5 When making these moves, the bishop, rook or queen may not move over any intervening pieces.

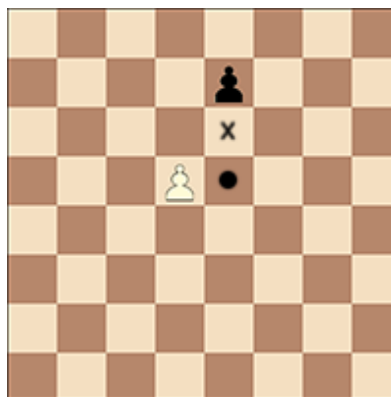
3.6 The knight may move to one of the squares nearest to that on which it stands but not on the same rank, file or diagonal.



- 3.7
- The pawn may move forward to the square immediately in front of it on the same file, provided that this square is unoccupied, or
 - on its first move the pawn may move as in 3.7.a or alternatively it may advance two squares along the same file provided, that both squares are unoccupied, or
 - the pawn may move to a square occupied by an opponent's piece diagonally in front of it on an adjacent file, capturing that piece.



- A pawn occupying a square on the same rank as and on an adjacent file to an opponent's pawn which has advanced two squares in one move from its original square may capture this opponent's pawn as though the latter had been moved only one square. This capture is only legal on the move following this advance and is called an "en passant" capture.

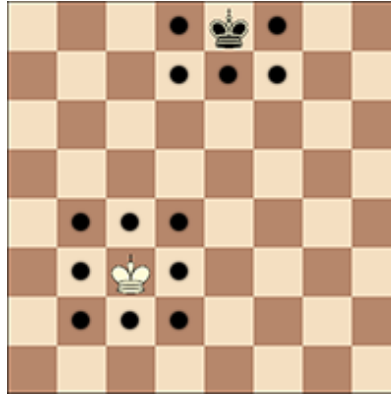


- When a pawn reaches the rank furthest from its starting position it must be exchanged as part of the same move on the same square for a new queen, rook, bishop or knight of the same colour. The player's choice is not restricted to pieces that have been captured previously. This exchange of a pawn for another piece is

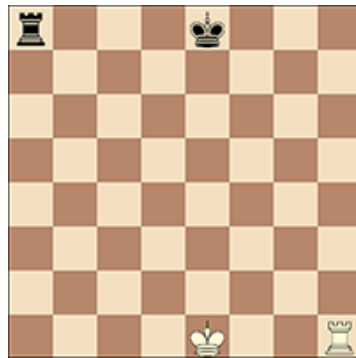
called “promotion” and the effect of the new piece is immediate. The pawn can be removed from the board and the new piece be put on the appropriate square in any order.

3.8 There are two different ways of moving the king:

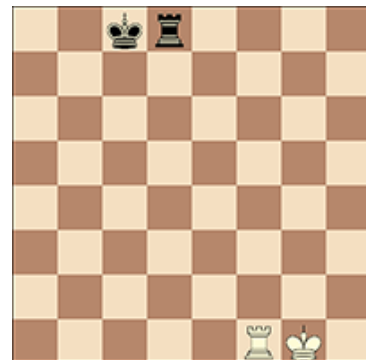
- a. by moving to an adjoining square not attacked by one or more of the opponent’s pieces



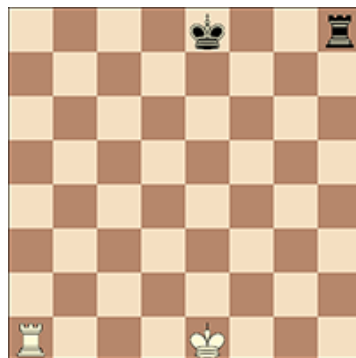
- b. by “castling”. This is a move of the king and either rook of the same colour along the player’s first rank, counting as a single move of the king and executed as follows: the king is transferred from its original square two squares towards the rook on its original square, then that rook is transferred to the square the king has just crossed.



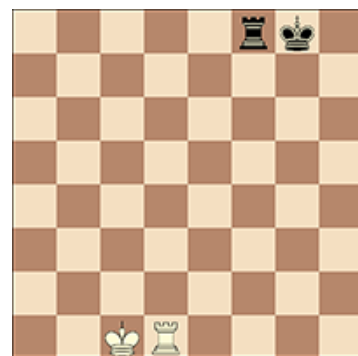
Before white kingside castling
Before black queenside castling



After white kingside castling
After black queenside castling



Before white queenside castling
Before black kingside castling



After white queenside castling
After black kingside castling

- (1) The right to castle has been lost:
[a] if the king has already moved, or

[b] with a rook that has already moved.

(2) Castling is prevented temporarily:

[a] if the square on which the king stands, or the square which it must cross, or the square which it is to occupy, is attacked by one or more of the opponent's pieces, or

[b] if there is any piece between the king and the rook with which castling is to be effected.

3.9 The king is said to be “in check” if it is attacked by one or more of the opponent's pieces, even if such pieces are constrained from moving to the square occupied by the king because they would then leave or place their own king in check. No piece can be moved that will either expose the king of the same colour to check or leave that king in check.

3.10 The move is called legal when all the relevant requirements of Articles 3.1 – 3.9 inclusive have been fulfilled.

Article 4: The act of moving the pieces

4.1 Each move must be made with one hand only.

4.2 Provided that he first expresses his intention (for example by saying “j’adoube” or “I adjust”), only the player having the move may adjust one or more pieces on their squares.

4.3 Except as provided in Article 4.2, if the player having the move touches on the chessboard, with the intention of moving or capturing:

a. one or more of his own pieces, he must move the first piece touched that can be moved

b. one or more of his opponent’s pieces, he must capture the first piece touched that can be captured

c. one piece of each colour, he must capture the opponent’s piece with his piece or, if this is illegal, move or capture the first piece touched that can be moved or captured. If it is unclear whether the player’s own piece or his opponent’s was touched first, the player’s own piece shall be considered to have been touched before his opponent’s.

4.4 If a player having the move:

a. touches his king and rook he must castle on that side if it is legal to do so

b. deliberately touches a rook and then his king he is not allowed to castle on that side on that move and the situation shall be governed by Article 4.3.a

c. intending to castle, touches the king and a rook at the same time, but castling with this rook is illegal, the player must make another legal move with his king (which may include castling with the other rook). If the king has no legal move, the player is free to make any legal move.

d. promotes a pawn, the choice of the piece is finalised when the piece has touched the square of promotion.

4.5 If none of the pieces touched in accordance with Article 4.3 or Article 4.4 can be moved or captured, the player may make any legal move.

4.6 When, as a legal move or part of a legal move, a piece has been released on a square, it cannot be moved to another square on this move. The move is considered to have been made in the case of:

- a. a capture, when the captured piece has been removed from the chessboard and the player, having placed his own piece on its new square, has released this capturing piece from his hand.
- b. castling, when the player's hand has released the rook on the square previously crossed by the king. When the player has released the king from his hand, the move is not yet made, but the player no longer has the right to make any move other than castling on that side, if this is legal. If castling on this side is illegal, the player must make another legal move with his king (which may include castling with the other rook). If the king has no legal move, the player is free to make any legal move.
- c. promotion, when the player's hand has released the new piece on the square of promotion.

4.7 A player forfeits his right to claim against his opponent's violation of Articles 4.1 – 4.6 inclusive once the player touches a piece with the intention of moving or capturing it.

Article 5: The completion of the game

- 5.1
 - a. The game is won by the player who has checkmated his opponent's king. This immediately ends the game, provided that the move producing the checkmate position was legal and in accordance with Articles 4.2 - 4.6 inclusive.
 - b. The game is won by the player whose opponent declares he resigns. This immediately ends the game.
- 5.2
 - a. The game is drawn when the player to move has no legal move and his king is not in check. The game is said to end in "stalemate". This immediately ends the game, provided that the move producing the stalemate position was legal and in accordance with Articles 4.2 - 4.6 inclusive.
 - b. The game is drawn when a position has arisen in which neither player can checkmate the opponent's king with any series of legal moves. The game is said to end in a "dead position". This immediately ends the game, provided that the move producing the position was legal and in accordance with Articles 4.2 - 4.6 inclusive.
 - c. The game is drawn upon agreement between the two players during the game. This immediately ends the game.
 - d. The game may be drawn if any identical position is about to appear or has appeared on the chessboard at least three times (see Article 9.2).
 - e. The game may be drawn if each player has made at least the last 50 consecutive moves without the movement of any pawn and without any capture (see Article 9.3).

COMPETITION RULES

Article 6: The chessclock

- 6.1 "Chessclock" means a timing device with two time displays, connected to each other in such a way that only one of them can run at one time.
 "Clock" in the Laws of Chess means one of the two time displays.
 Each time display has a "flag".
 "Flag-fall" means the expiration of the allotted time for a player.
- 6.2
 - a. During the game each player, having made his move on the chessboard, shall stop his own clock and start his opponent's clock (that is to say, he shall "press" his clock). This "completes" the move. A move is also completed if:
 (1) the move ends the game (see Articles 5.1.a, 5.2.a, 5.2.b, 5.2.c and 9.6), or

(2) the player has made his next move.

A player must be allowed to press his clock after making his move, even after the opponent has made his next move. The time between making the move on the chessboard and pressing the clock is regarded as part of the time allotted to the player.

- b. A player must press his clock with the same hand as that with which he made his move. It is forbidden for a player to keep his finger on the clock or to “hover” over it.
- c. The players must handle the chessclock properly. It is forbidden to press it before making a move; to punch it forcibly, to pick it up, or to knock it over. Improper clock handling shall be penalised in accordance with Article 13.9.
- d. Only the player whose clock is running is allowed to adjust the pieces.
- e. If a player is unable to use the clock, an assistant, who must be acceptable to the arbiter, may be provided by the player to perform this operation. His clock shall be adjusted by the arbiter in an equitable way. Adjustment of the clock shall not apply to the clock of a player with a disability.

- 6.3
 - a. When using a chessclock, each player must complete a minimum number of moves or all moves in an allotted period of time and/or may be allocated an additional amount of time with each move as specified in the rules of the event. All these requirements must be specified in advance.
 - b. The time saved by a player during one period is added to his time available for the next period, where applicable.

6.4 Immediately after a flag falls, the requirements of Article 6.3 a. must be checked.

6.5 Before the start of the game the arbiter decides where the chessclock is to be placed.

6.6 At the time determined for the start of the game White’s clock is started.

- 6.7
 - a. Any player who arrives at the chessboard after the start of the session shall lose the game unless the arbiter decides to postpone the start of a game due to unforeseen circumstances. Thus the default time is 0 minutes. The rules of a competition may specify a different default time.
 - b. If the rules of a competition specify in advance a different default time, the following shall apply. If neither player is present initially, the player who has the white pieces shall lose all the time that elapses until he arrives, unless the rules of the competition specify or the arbiter decides otherwise.

6.8 A flag is considered to have fallen when the arbiter observes the fact or when either player has made a valid claim to that effect.

6.9 Except where one of Articles: 5.1.a, 5.1.b, 5.2.a, 5.2.b, 5.2.c and 9.6 applies, if a player does not complete the prescribed number of moves in the allotted time, the game is lost by that player. However, the game is drawn if the position is such that the opponent cannot checkmate the player’s king by any possible series of legal moves.

- 6.10
 - a. Every indication given by the chessclock is considered to be conclusive in the absence of any evident defect. A chessclock with an evident defect shall be replaced by the arbiter, who shall use his best judgement when determining the times to be shown on the replacement chessclock.
 - b. If during a game it is found that the setting of either or both clocks is incorrect, either player or the arbiter shall stop the chessclock immediately. The arbiter shall install

the correct setting and adjust the times and move-counter, if necessary. He shall use his best judgement when determining the times in the new setting.

- 6.11 If both flags have fallen and it is impossible to establish which flag fell first then:
- a. the game shall continue if this occurs in any period of the game except the last period
 - b. the game is drawn if this occurs in the period of a game in which all remaining moves must be completed.
- 6.12
- a. If the game needs to be interrupted, the arbiter shall stop the chessclock.
 - b. A player may stop the chessclock only in order to seek the arbiter's assistance, for example when promotion is about to take place and the piece required is not available.
 - c. The arbiter shall decide when the game is to be restarted in all cases.
 - d. If a player stops the chessclock in order to seek the arbiter's assistance, the arbiter shall determine if the player had any valid reason for doing so. If it is obvious that the player had no valid reason for stopping the chessclock, the player shall be penalised in accordance with Article 13.9.
- 6.13 Screens, monitors, or demonstration boards showing the current position on the chessboard, the moves and the number of moves made/completed, and clocks which also show the number of moves, are allowed in the playing hall. However, the player may not make a claim relying only on information shown in this manner.

Article 7: Irregularities

- 7.1 If an irregularity occurs and the pieces have to be restored to a previous position, the position before the irregularity shall be reinstated. If the position immediately before the irregularity cannot be determined, the game shall continue from the last identifiable position prior to the irregularity. The game shall then continue from this reinstated position. The arbiter shall use his best judgement to determine the times to be shown on the chessclock. This includes the option not to change the clock times. He shall also, if necessary, adjust the clock's move-counter.
- 7.2
- a. If during a game it is found that the initial position of the pieces was incorrect, the game shall be cancelled and a new game played.
 - b. If during a game it is found that the chessboard has been placed contrary to Article 2.1, the game shall continue but the position reached must be transferred to a correctly placed chessboard.
- 7.3 If a game has begun with colours reversed then it shall continue, unless the arbiter rules otherwise.
- 7.4 If a player displaces one or more pieces, he shall re-establish the correct position in his own time. If necessary, either the player or his opponent shall stop the chessclock and ask for the arbiter's assistance. The arbiter may penalise the player who displaced the pieces in accordance with Article 13.9.
- 7.5
- a. If during a game it is found that an illegal move, including failing to meet the requirements of promotion (not exchanging the pawn for a new piece), has been completed, the position immediately before the irregularity shall be reinstated. If the position immediately before the irregularity cannot be determined, the game shall continue from the last identifiable position prior to the irregularity. Articles 4.3 and

4.6 apply to the move replacing the illegal move. The game shall then continue from this reinstated position.

- b. After the action taken under Article 7.5.a, for the first two completed illegal moves by a player the arbiter shall give two minutes extra time to his opponent in each instance; for a third completed illegal move by the same player, the arbiter shall declare the game lost by this player. However, the game is drawn if the position is such that the opponent cannot checkmate the player's king by any possible series of legal moves.

Article 8: The recording of the moves

- 8.1
 - a. In the course of play each player is required to record his own moves and those of his opponent in the correct manner, move after move, as clearly and legibly as possible, in the algebraic notation (Appendix C), on the "scoresheet" prescribed for the competition. It is forbidden to write the moves in advance, unless the player is claiming a draw according to Article 9.2, or 9.3 or adjourning a game according to Appendix G.1 a.
 - b. The scoresheet shall be used only for recording the moves, the times of the clocks, the offers of a draw, and matters relating to a claim and other relevant data.
 - c. A player may reply to his opponent's move before recording it, if he so wishes. He must record his previous move before making another.
 - d. Both players must record the offer of a draw on the scoresheet (see Appendix C.12).
 - e. If a player is unable to keep score, an assistant, who must be acceptable to the arbiter, may be provided by the player to write the moves. His clock shall be adjusted by the arbiter in an equitable way. Adjustment of the clock shall not apply to a player with a disability.
- 8.2 The scoresheet shall be visible to the arbiter throughout the game.
- 8.3 The scoresheets are the property of the organiser of the event.
- 8.4
 - a. If the players have an additional time of 30 seconds or more added with each move, they are required to record the moves during the entire game.
 - b. If a player has less than five minutes left on his clock at some stage in a period and does not have additional time of 30 seconds or more added with each move, then for the remainder of the period he is not obliged to meet the requirements of Article 8.1. Immediately after a flag has fallen, the player must update his scoresheet completely before moving a piece on the chessboard.
- 8.5
 - a. If neither player is required to keep score under Article 8.4, the arbiter or an assistant should try to be present and keep score. In this case, immediately after a flag has fallen, the arbiter shall stop the chessclock. Then both players shall update their scoresheets, using the arbiter's or the opponent's scoresheet.
 - b. If only one player is not required to keep score under Article 8.4, he must, as soon as his flag has fallen, update his scoresheet completely before moving a piece on the chessboard. Provided it is that player's move, he may use his opponent's scoresheet, but must return it before making a move.
- 8.6
 - a. If neither player keeps score under Article 8.5 the arbiter or an assistant should try to be present and keep score. Immediately after a flag has fallen, the arbiter shall stop the chessclock. Then both players shall update their scoresheets, using the arbiter's information if available.

- b. If only one player has not kept score under Article 8.5 he must, as soon as his flag has fallen, update his scoresheet completely before moving a piece on the chessboard, while his clock is still running. Provided it is that player's move, he may use his opponent's scoresheet, but must return it before making a move.
- c. If no complete scoresheet is available, the players must reconstruct the game on a second chessboard under the control of the arbiter or an assistant. He shall first record the actual game position, clock times, whose clock was running and the number of moves made/completed, if this information is available, before reconstruction takes place.

8.7 If the scoresheets cannot be brought up to date showing that a player has overstepped the allotted time, the next move made shall be considered as the first of the following time period, unless there is evidence that more moves have been made/completed.

8.8 At the conclusion of the game both players shall sign both scoresheets, indicating the result of the game. Even if incorrect, this result shall stand, unless the arbiter decides otherwise.

Article 9: The drawn game

- 9.1
- a. The rules of a competition may specify that players cannot agree to a draw in less than a specified number of moves, or cannot agree at all, without the permission of the arbiter.
 - b. However, if the rules of a competition allow a draw agreement the following shall apply:
 - (1) A player wishing to offer a draw shall do so after having made a move on the chessboard and before pressing his clock. An offer at any other time during play is still valid but Article 12.5 must be considered. No conditions can be attached to the offer. In both cases the offer cannot be withdrawn and remains valid until the opponent accepts it, rejects it orally, rejects it by touching a piece with the intention of moving or capturing it, or until the game is concluded in some other way.
 - (2) The offer of a draw shall be noted by each player on his scoresheet with a symbol (see Appendix C.12).
 - (3) A claim of a draw under Article 9.2, 9.3 or 10.2 shall be considered to be an offer of a draw.

9.2 The game is drawn, upon a correct claim by a player having the move, when the same position for at least the third time (not necessarily by a repetition of moves):

- a. is about to appear, if he first writes his move, which cannot be changed, on his scoresheet and declares to the arbiter his intention to make this move, or
- b. has just appeared, and the player claiming the draw has the move.

Positions are considered the same only if the same player has the move, pieces of the same kind and colour occupy the same squares and the possible moves of all the pieces of both players are the same. Thus positions are not the same if:

- a. at the start of the sequence a pawn could have been captured en passant.
- b. a king or rook had castling rights, but forfeited these after moving. The castling rights are lost only after the king or rook is moved.

9.3 The game is drawn, upon a correct claim by a player having the move, if:

- a. he writes his move, which cannot be changed, on his scoresheet and declares to the arbiter his intention to make this move which will result in the last 50 moves having

been made by each player without the movement of any pawn and without any capture, or

- b. the last 50 consecutive moves have been made by each player without the movement of any pawn and without any capture.

9.4 If the player touches a piece as in Article 4.3 without having claimed the draw, he loses the right to claim, as in Article 9.2 or 9.3, on that move.

9.5 If a player claims a draw under Article 9.2 or 9.3 he or the arbiter shall stop the chessclock (see Article 6.12 b). He is not allowed to withdraw his claim.

- a. If the claim is found to be correct, the game is immediately drawn.
- b. If the claim is found to be incorrect, the arbiter shall add two minutes to the opponent's remaining thinking time. Then the game shall continue. If the claim was based on an intended move, this move must be made, in accordance with Articles 3 and 4.

9.6 The game is drawn when a position is reached from which a checkmate cannot occur by any possible series of legal moves. This immediately ends the game, provided that the move producing this position was legal and in accordance with Articles 4.2 - 4.6 inclusive.

Article 10: Quickplay Finish

10.1 A "quickplay finish" is the phase of a game when all the remaining moves must be made in a finite time.

10.2 If the player having the move has less than two minutes left on his clock, he may claim a draw before his flag falls. He may claim on the basis that his opponent cannot win by "normal means", and/or that his opponent has been making no effort to win by normal means. He shall summon the arbiter and he or the arbiter shall stop the chessclock (see Article 6.12 b).

- a. If the arbiter agrees that the opponent is making no effort to win the game by normal means, or that it is not possible to win by normal means, he shall declare the game drawn. Otherwise the game shall continue as according to b, c or d.
- b. If the arbiter postpones his decision, the opponent may be awarded two extra minutes and the game shall continue, if possible in the presence of an arbiter. The arbiter shall declare the final result later in the game or as soon as possible after the flag of either player has fallen. He shall declare the game drawn if he agrees that the final position cannot be won by normal means, or that the opponent of the player whose flag has fallen was not making sufficient attempts to win by normal means.
- c. The arbiter may decide, that the game shall be continued using a "time delay" or "cumulative time" mode. The extra time shall be 5 seconds added for each move for both players. The clocks shall then be set with the extra time and the opponent shall be awarded two extra minutes.
- d. If the arbiter rejects the claim the opponent shall be awarded two extra minutes.

Article 11: Points

11.1 Unless the rules of a competition specify otherwise, a player who wins his game, or wins by forfeit, scores one point (1), a player who loses his game, or forfeits scores no points (0) and a player who draws his game scores a half point (½).

Article 12: The conduct of the players

- 12.1 The players shall take no action that will bring the game of chess into disrepute.
- 12.2 The “playing venue” is defined as the “playing area”, rest rooms, toilets, refreshment area, area set aside for smoking and other places as designated by the arbiter.
The playing area is defined as the place where the games of an event are played.
Only with the permission of the arbiter can
- a. a player leave the playing venue.
 - b. a player having the move leave the playing area.
 - c. people, who are neither players nor arbiters, be allowed access to the playing area.
- 12.3
- a. During play the players are forbidden to make use of any notes, sources of information or advice, or “analyse”, on another chessboard, any game.
 - b. A player is forbidden to have a mobile phone and/or other electronic means of communication in the playing venue, unless permitted by the arbiter and the device is completely switched off. If it is evident that such a device is not completely switched off, the player shall lose the game. The opponent shall win. However, if the opponent cannot win the game by any series of legal moves, his score shall be a draw.
The rules of a competition may specify a different, less severe, penalty.
 - c. Smoking is permitted only in the section of the venue designated by the arbiter.
- 12.4 Players who have finished their games shall be considered to be spectators.
- 12.5 It is forbidden to distract or annoy the opponent in any manner whatsoever. This includes unreasonable claims, unreasonable offers of a draw or the introduction of a source of noise into the playing area.
- 12.6 Infraction of any part of Articles 12.1 to 12.5 shall lead to penalties in accordance with Article 13.9.
- 12.7 Persistent refusal by a player to comply with the Laws of Chess shall be penalised by loss of the game. The arbiter shall decide the score of the opponent.
- 12.8 If both players are found guilty according to Article 12.7, the game shall be declared lost by both players.
- 12.9 A player shall have the right to request from the arbiter an explanation of particular points in the Laws of Chess.
- 12.10 Unless the rules of the competition specify otherwise, a player may appeal against any decision of the arbiter, even if he has signed the scoresheet as required in Article 8.8.

Article13: The role of the Arbiter (see Preface)

- 13.1 The arbiter shall see that the Laws of Chess are strictly observed.
- 13.2 The arbiter shall act in the best interest of the competition. He should ensure that a good playing environment is maintained and that the players are not disturbed. He shall supervise the progress of the competition. The arbiter shall take special measures in the interests of disabled players and those who need medical attention.

- 13.3 The arbiter shall observe the games, especially when the players are short of time, enforce decisions he has made and impose penalties on players where appropriate.
- 13.4 The arbiter may appoint assistants to observe games, for example when several players are short of time.
- 13.5 The arbiter may award either or both players additional time in the event of external disturbance of the game.
- 13.6 The arbiter must not intervene in a game except in cases described by the Laws of Chess. He shall not indicate the number of moves made, except in applying Article 8.5 when at least one flag has fallen. The arbiter shall refrain from informing a player that his opponent has completed a move or that the player has not pressed his clock.
- 13.7 If someone observes an irregularity, he may inform only the arbiter. Otherwise spectators and players in other games are not to speak about or otherwise interfere in a game. If necessary, the arbiter may expel offenders from the playing venue.
- 13.8 Unless authorised by the arbiter, it is forbidden for anybody to use a mobile phone or any kind of communication device in the playing venue or any contiguous area designated by the arbiter.
- 13.9 Options available to the arbiter concerning penalties:
- a. warning
 - b. increasing the remaining time of the opponent
 - c. reducing the remaining time of the offending player
 - d. a fine announced in advance
 - e. declaring the game to be lost by the offending player (the arbiter also shall decide the opponent's score)
 - f. increasing the points scored in the game by the opponent to the maximum available for that game
 - g. reducing the points scored in the game by the offending person
 - h. expulsion from the event which should only be considered in conjunction with the organiser.

Article 14: FIDE

- 14.1 Member federations may ask FIDE to give a ruling on matters relating to the Laws of Chess.

APPENDICES

Appendix A Rapidplay

- A.1 A “Rapidplay” game is one where either all the moves must be made in a fixed time of at least 10 minutes but less than 60 minutes for each player; or the time allotted + 60 times any increment is at least 10 minutes, but less than 60 minutes for each player.
- A.2 Players do not need to record the moves.
- A.3 Where each arbiter supervises at most three games from the start of play in a particular round of an event the Competition Rules shall apply.
- A.4 Where one arbiter supervises more than three games from the start of play in a particular round of an event the Competition Rules shall apply, except where they are overridden by the following Laws of Rapidplay:
- a. Once each player has completed three moves, no claim can be made regarding incorrect piece placement, orientation of the chessboard or clock setting.
In case of incorrect king placement, castling is not allowed. In case of incorrect rook placement, castling with this rook is not allowed.
 - b. The arbiter shall make a ruling in accordance with Article 4 (The act of moving the pieces), only if requested to do so by one or both players.
 - c. An illegal move is completed once the player has pressed his clock. Before making a move, the opponent is then entitled to claim that the player completed an illegal move. Only after such a claim shall the arbiter make a ruling. However, if both kings are in check or the promotion of a pawn is not completed (the pawn has not been exchanged for a new piece), the arbiter shall intervene if he observes the fact.
 - d.
 1. A flag is considered to have fallen when a player has made a valid claim to that effect. The arbiter shall refrain from signalling a flag-fall, but he may do so if both flags have fallen, in which case he shall declare the game drawn.
 2. To claim a win on time, the claimant must stop the chessclock and notify the arbiter. For the claim to be successful, the claimant must have time remaining on his own clock after the chessclock has been stopped.

Appendix B. Blitz

- B.1 A “blitz” game” is one where all the moves must be made in a fixed time of less than 10 minutes for each player; or the allotted time + 60 times any increment is less than 10 minutes.
- B.2 The penalties mentioned in Articles 7 and 9 of the Competition Rules shall be one minute instead of two minutes.
- B.3 Where each arbiter supervises one game from the start of play in a particular round of an event the Competition Rules and A.2 shall apply.
- B.4 Where one arbiter supervises more than one game from the start of play in a particular round of an event the following shall apply:
- a. Play shall be governed by the Rapidplay Laws as in Appendix A except where they are overridden by the following Laws of Blitz.
 - b. Article 10.2 and Appendix A.4.c do not apply.
 - c. An illegal move is completed once the player has pressed his clock. Before making a move, the opponent is then entitled to claim a win. However, the game is drawn if the position is such that the opponent cannot checkmate the player’s king by any possible series of legal moves.
Once the opponent has made his own move, an illegal move cannot be corrected unless this is agreed by the players without intervention of an arbiter.
 - d. If both kings are in check or the promotion of a pawn is not completed (the pawn has not been exchanged for a new piece), the arbiter shall intervene if he observes the fact.

Appendix C. Algebraic notation

FIDE recognises for its own tournaments and matches only one system of notation, the Algebraic System, and recommends the use of this uniform chess notation also for chess literature and periodicals. Scoresheets using a notation system other than algebraic may not be used as evidence in cases where normally the scoresheet of a player is used for that purpose. An arbiter who observes that a player is using a notation system other than the algebraic should warn the player of this requirement.

Description of the Algebraic System

- C.1 In this description, “piece” means a piece other than a pawn.
- C.2 Each piece is indicated by an abbreviation. In the English language it is the first letter, a capital letter, of its name. Example: K=king, Q=queen, R=rook, B=bishop, N=knight. (N is used for a knight, in order to avoid ambiguity.)
- C.3 For the abbreviation of the name of the pieces, each player is free to use the abbreviation of the name which is commonly used in his country. Examples: F=fou (French for bishop), L=loper (Dutch for bishop). In printed periodicals, the use of figurines is recommended.
- C.4 Pawns are not indicated by their first letter, but are recognised by the absence of such a letter. Examples: e5, d4, a5.
- C.5 The eight files (from left to right for White and from right to left for Black) are indicated by the small letters, a, b, c, d, e, f, g, and h, respectively.
- C.6 The eight ranks (from bottom to top for White and from top to bottom for Black) are numbered 1, 2, 3, 4, 5, 6, 7, 8, respectively. Consequently, in the initial position the white pieces and pawns are placed on the first and second ranks; the black pieces and pawns on the eighth and seventh ranks.
- C.7 As a consequence of the previous rules, each of the sixty-four squares is invariably indicated by a unique combination of a letter and a number.

a8	b8	c8	d8	e8	f8	g8	h8
a7	b7	c7	d7	e7	f7	g7	h7
a6	b6	c6	d6	e6	f6	g6	h6
a5	b5	c5	d5	e5	f5	g5	h5
a4	b4	c4	d4	e4	f4	g4	h4
a3	b3	c3	d3	e3	f3	g3	h3
a2	b2	c2	d2	e2	f2	g2	h2
a1	b1	c1	d1	e1	f1	g1	h1

- C.8 Each move of a piece is indicated by a) the first letter of the name of the piece in question and b) the square of arrival. There is no hyphen between a) and b). Examples: Be5, Nf3, Rd1.
In the case of pawns, only the square of arrival is indicated. Examples: e5, d4, a5.

- C.9 When a piece makes a capture, an x may be inserted between a) the first letter of the name of the piece in question and b) the square of arrival. Examples: Bxe5, Nxf3, Rxd1, but see also C10.
When a pawn makes a capture, the file of departure must be indicated, then an x may be inserted, then the square of arrival. Examples: dxe5, gxf3, axb5. In the case of an “en passant” capture, “e.p.” may be appended to the notation. Example: exd6 e.p.
- C.10 If two identical pieces can move to the same square, the piece that is moved is indicated as follows:
1. If both pieces are on the same rank: by a) the first letter of the name of the piece, b) the file of departure, and c) the square of arrival.
 2. If both pieces are on the same file: by a) the first letter of the name of the piece, b) the rank of the square of departure, and c) the square of arrival.
- If the pieces are on different ranks and files method 1) is preferred.
Examples:
1. There are two knights, on the squares g1 and e1, and one of them moves to the square f3: either Ngf3 or Nef3, as the case may be.
 2. There are two knights, on the squares g5 and g1, and one of them moves to the square f3: either N5f3 or N1f3, as the case may be.
 3. There are two knights, on the squares h2 and d4, and one of them moves to the square f3: either Nhf3 or Ndf3, as the case may be.
 4. If a capture takes place on the square f3, the notations of the previous examples are still applicable, but an x may be inserted: 1) either Ngxf3 or Nexf3, 2) either N5xf3 or N1xf3, 3) either Nhxf3 or Ndx3, as the case may be.
- C.11 In the case of the promotion of a pawn, the actual pawn move is indicated, followed immediately by the abbreviation of the new piece. Examples: d8Q, exf8N, b1B, g1R.
- C.12 The offer of a draw shall be marked as (=).
- C.13 Essential abbreviations
- 0-0 = castling with rook h1 or rook h8 (kingside castling)
0-0-0 = castling with rook a1 or rook a8 (queenside castling)
x = captures
+ = check
++ or # = checkmate
e.p. = captures “en passant”
- Sample game:
1.e4 e5 2. Nf3 Nf6 3. d4 exd4 4. e5 Ne4 5. Qxd4 d5 6. exd6 e.p. Nxd6 7. Bg5 Nc6 8. Qe3+ Be7 9. Nbd2 0-0 10. 0-0-0 Re8 11. Kb1 (=)
Or: 1. e4 e5 2. Nf3 Nf6 3. d4 ed4 4. e5 Ne4 5. Qd4 d5 6. ed6 Nd6 7. Bg5 Nc6 8. Qe3 Be7 9 Nbd2 0-0 10. 0-0-0 Re8 11. Kb1 (=)

Appendix D. Quickplay finishes where no arbiter is present in the venue

D.1 Where games are played as in Article 10, a player may claim a draw when he has less than two minutes left on his clock and before his flag falls. This concludes the game.

He may claim on the basis:

- a. that his opponent cannot win by normal means, and/or
- b. that his opponent has been making no effort to win by normal means.

In a) the player must write down the final position and his opponent must verify it.

In b) the player must write down the final position and submit an up-to-date scoresheet.

The opponent shall verify both the scoresheet and the final position.

The claim shall be referred to the designated arbiter.

Appendix E. Rules for play with blind and visually disabled players

- E.1 The organiser, after consulting the arbiter, shall have the power to adapt the following rules according to local circumstances. In competitive chess between sighted and visually disabled players (legally blind) either player may demand the use of two boards, the sighted player using a normal board, the visually handicapped player using one specially constructed. The specially constructed board must meet the following requirements:
- measure at least 20 cm by 20 cm, and
 - the black squares slightly raised, and
 - a securing aperture in each square, and
 - every piece provided with a peg that fits into the securing aperture, and
 - pieces of Staunton design, the black pieces being specially marked.

E.2 The following regulations shall govern play:

- The moves shall be announced clearly, repeated by the opponent and executed on his chessboard. When promoting a pawn, the player must announce which piece is chosen. To make the announcement as clear as possible, the use of the following names is suggested instead of the corresponding letters:

A - Anna
B - Bella
C - Cesar
D - David
E - Eva
F - Felix
G - Gustav
H - Hector

Unless the arbiter decides otherwise: ranks from white to black shall receive the German numbers

1 - eins
2 - zwei
3 - drei
4 - vier
5 - fuenf
6 - sechs
7 - sieben
8 - acht

Castling is announced “Lange Rochade” (German for long castling) and “Kurze Rochade” (German for short castling).

The pieces bear the names: Koenig, Dame, Turm, Laeufer, Springer, Bauer.

- On the visually disabled player's board a piece shall be considered “touched” when it has been taken out of the securing aperture.
- A move shall be considered “made” when:
 - in the case of a capture, the captured piece has been removed from the board of the player whose turn it is to move
 - a piece is placed into a different securing aperture
 - the move has been announced.Only then shall the opponent's clock be started.

As far as points 2 and 3 are concerned the normal rules are valid for the sighted player.

4. A specially constructed chessclock for the visually disabled shall be admissible. It shall incorporate the following features:
 - a. a dial fitted with reinforced hands, with every five minutes marked by one raised dot, and every 15 minutes by two raised dots, and
 - b. a flag which can be easily felt; care should be taken that the flag is so arranged as to allow the player to feel the minute hand during the last 5 minutes of the full hour.
 - c. optionally, a means of announcing audibly only to the visually disabled player the number of moves.
5. The visually disabled player must record the moves in Braille or longhand or record the moves on a electronic device.
6. A slip of the tongue in the announcement of a move must be corrected immediately and before the clock of the opponent is started.
7. If during a game different positions should arise on the two boards, they must be corrected with the assistance of the arbiter and by consulting both players' game scores. If the two game scores correspond with each other, the player who has written the correct move but made the wrong one must adjust his position to correspond with the move on the game scores. When the game scores are found to differ, the moves shall be retraced to the point where the two scores agree, and the arbiter shall readjust the clocks accordingly.
8. The visually disabled player shall have the right to make use of an assistant who shall have any or all of the following duties:
 - a. making either player's move on the board of the opponent
 - b. announcing the moves of both players
 - c. keeping the game score of the visually disabled player and starting his opponent's clock (keeping point 3.c in mind)
 - d. informing the visually disabled player only at his request of the number of moves completed and the time used up by both players
 - e. claiming the game in cases where the time limit has been exceeded and informing the arbiter when the sighted player has touched one of his pieces
 - f. carrying out the necessary formalities in case the game is adjourned.
9. If the visually disabled player does not make use of an assistant, the sighted player may make use of one who shall carry out the duties mentioned in points 8.a and 8.b.

Appendix F. Chess960 Rules

F.1 Before a Chess960 game a starting position is randomly set up, subject to certain rules. After this, the game is played in the same way as standard chess. In particular, pieces and pawns have their normal moves, and each player's objective is to checkmate the opponent's king.

F.2 Starting position requirements

The starting position for Chess960 must meet certain rules. White pawns are placed on the second rank as in regular chess. All remaining white pieces are placed randomly on the first rank, but with the following restrictions:

- a. the king is placed somewhere between the two rooks, and
- b. the bishops are placed on opposite-coloured squares, and
- c. the black pieces are placed opposite the white pieces.

The starting position can be generated before the game either by a computer program or using dice, coin, cards, etc.

F.3 Chess960 Castling Rules

a. Chess960 allows each player to castle once per game, a move by potentially both the king and rook in a single move. However, a few interpretations of standard chess rules are needed for castling, because the standard rules presume initial locations of the rook and king that are often not applicable in Chess960.

b. *How to castle*

In Chess960, depending on the pre-castling position of the castling king and rook, the castling manoeuvre is performed by one of these four methods:

1. double-move castling: by making a move with the king and a move with the rook, or
2. transposition castling: by transposing the position of the king and the rook, or
3. king-move-only castling: by making only a move with the king, or
4. rook-move-only castling: by making only a move with the rook.

Recommendations

1. When castling on a physical board with a human player, it is recommended that the king be moved outside the playing surface next to his final position, the rook then be moved from its starting to ending position, and then the king be placed on his final square.
2. After castling, the rook and king's final positions should be exactly the same positions as they would be in standard chess.

Clarification

Thus, after c-side castling (notated as 0-0-0 and known as queen-side castling in orthodox chess), the king is on the c-square (c1 for white and c8 for black) and the rook is on the d-square (d1 for white and d8 for black). After g-side castling (notated as 0-0 and known as king-side castling in orthodox chess), the king is on the g-square (g1 for white and g8 for black) and the rook is on the f-square (f1 for white and f8 for black).

Notes

1. To avoid any misunderstanding, it may be useful to state "I am about to castle" before castling.
2. In some starting positions, the king or rook (but not both) does not move during castling.

3. In some starting positions, castling can take place as early as the first move.
4. All the squares between the king's initial and final squares (including the final square) and all the squares between the rook's initial and final squares (including the final square) must be vacant except for the king and castling rook.
5. In some starting positions, some squares can stay filled during castling that would have to be vacant in standard chess. For example, after c-side castling 0-0-0, it is possible to have a, b, and/or e still filled, and after g-side castling (0-0), it is possible to have e and/or h filled.

Appendix G Adjourned games

- G.1
- a. If a game is not finished at the end of the time prescribed for play, the arbiter shall require the player having the move to “seal” that move. The player must write his move in unambiguous notation on his scoresheet, put his scoresheet and that of his opponent in an envelope, seal the envelope and only then stop the chessclock. Until he has stopped the chessclock the player retains the right to change his sealed move. If, after being told by the arbiter to seal his move, the player makes a move on the chessboard he must write that same move on his scoresheet as his sealed move.
 - b. A player having the move who adjourns the game before the end of the playing session shall be considered to have sealed at the nominal time for the end of the session, and his remaining time shall so be recorded.
- G.2 The following shall be indicated upon the envelope:
- a. the names of the players, and
 - b. the position immediately before the sealed move, and
 - c. the time used by each player, and
 - d. the name of the player who has sealed the move, and
 - e. the number of the sealed move, and
 - f. the offer of a draw, if the proposal is current, and
 - g. the date, time and venue of resumption of play.
- G.3 The arbiter shall check the accuracy of the information on the envelope and is responsible for its safekeeping.
- G.4 If a player proposes a draw after his opponent has sealed his move, the offer is valid until the opponent has accepted it or rejected it as in Article 9.1.
- G.5 Before the game is to be resumed, the position immediately before the sealed move shall be set up on the chessboard, and the times used by each player when the game was adjourned shall be indicated on the clocks.
- G.6 If prior to the resumption the game is agreed drawn, or if one of the players notifies the arbiter that he resigns, the game is concluded.
- G.7 The envelope shall be opened only when the player who must reply to the sealed move is present.
- G.8 Except in the cases mentioned in Articles 5, 6.9 and 9.6, the game is lost by a player whose recording of his sealed move:
- a. is ambiguous, or
 - b. is recorded in such a way that its true significance is impossible to establish, or
 - c. is illegal.
- G.9 If, at the agreed resumption time:
- a. the player having to reply to the sealed move is present, the envelope is opened, the sealed move is made on the chessboard and his clock is started.
 - b. the player having to reply to the sealed move is not present, his clock shall be started on his arrival, he may stop his clock and summon the arbiter; the envelope is then opened and the sealed move is made on the chessboard; his clock is then restarted.
 - c. the player who sealed the move is not present, his opponent has the right to record his reply on the scoresheet, seal his scoresheet in a fresh envelope, stop his clock and

start the absent player's clock instead of making his reply in the normal manner. If so, the envelope shall be handed to the arbiter for safekeeping and opened on the absent player's arrival.

- G.10 Any player who arrives at the chessboard after the default time shall lose the game unless the arbiter decides otherwise. However, if the player who made the sealed move arrives after the default time: he shall win if he sealed checkmate; he shall draw if he sealed stalemate. However, the game is drawn if the position is such that the opponent cannot checkmate the player's king by any possible series of legal moves.
- G.11 If the rules of a competition specify that the default time is not zero, the following shall apply: If neither player is present initially, the player who has to reply to the sealed move shall lose all the time that elapses until he arrives, unless the rules of the competition specify or the arbiter decides otherwise.
- G.12
- a. If the envelope containing the sealed move is missing, the game shall continue from the adjourned position, with the clock times recorded at the time of adjournment. If the time used by each player cannot be re-established the arbiter shall set the clocks. The player who sealed the move shall make the move he states he sealed on the chessboard.
 - b. If it is impossible to re-establish the position, the game is annulled and a new game must be played.
- G.13 If, upon resumption of the game, either player points out before making his first move that the time used has been incorrectly indicated on either clock, the error must be corrected. If the error is not then established the game shall continue without correction unless the arbiter decides otherwise.
- G.14 The duration of each resumption session shall be controlled by the arbiter's timepiece. The starting time shall be announced in advance.

Appendix H Glossary of terms in the laws of chess

The number after the term is the first time it appears in the Laws.

adjourn: 8.1. Instead of playing the game in one session it is temporarily halted and then continued at a later time.

algebraic notation: 8.1. Recording the moves using a-h and 1-8 on the 8x8 board.

analyse: 12.3. Where player(s) make moves on a board to try to determine what is the best continuation.

appeal: 12.10. Normally a player has the right to appeal against a decision of the arbiter or organiser.

arbiter: Preface. The person(s) responsible for ensuring that the rules of a competition are followed.

arbiter's discretion: There are many instances in the Laws where the arbiter must use his judgement.

assistant: 8.1. A person who may help the smooth running of the event in various ways.

attack: 3.1. A piece is said to attack an opponent's piece if the piece could make a capture on that square.

black: 2.2. **1.** There are 16 dark coloured pieces or squares called black. Or **2.** When capitalised, this also refers to the player of the black pieces.

blitz: A game where each player's thinking time is less than 10 minutes

board: 2.4. Short for chessboard.

Bronstein mode: 6.3b. See delay mode.

capture: 3.1. Where a piece is moved from its square to a square occupied by an opponent's piece, the latter is removed from the board. See also 3.7d. In notation x.

castling: 3.8a-b. A move of the king towards a rook. See the article. In notation 0-0 kingside castling, 0-0-0 queenside castling.

cellphone: See mobile phone.

check: 3.9. Where a king is attacked by one or more of the opponent's pieces. In notation +.

checkmate: 1.2. Where the king is attacked and cannot parry the threat. In notation ++.

chessboard: 1.1. The 8x8 grid as in 2.1.

chessclock: 6.1. A clock with two time displays connected to each other.

chess set: the 32 pieces on the chessboard.

Chess960: F. A variant of chess where the back row pieces are set up in one of the 960 possible variations.

claim: 6.8. The player may make a claim to the arbiter under various circumstances.

clock: 6.1. One of the two time displays.

completed move: 6.7a. Where a player has made his move and then pressed his clock.

contiguous area: An area, touching but not actually part of playing area. For example, that set aside for spectators.

cumulative (Fischer) mode: 10.2c. Where a player receives an extra amount of time (often 30 seconds) prior to each move.

dead position: 5.2b. Where neither player can mate the opponent's king with any series of legal moves.

default time: 6.6. The specified time a player may be late without being forfeited.

Delay (Bronstein) mode: 6.3b. Both players receive an allotted 'main thinking time'. Each player also receives a "fixed extra time" with every move. The countdown of the main thinking time only commences after the fixed extra time has expired. Provided the player presses his clock before the expiration of the fixed extra time, the main thinking time does not change, irrespective of the proportion of the fixed extra time used.

demonstration board: 6.13. A display of the position on the board where the pieces are moved by hand.

diagonal: 2.4. A straight line of squares of the same colour, running from one edge of the board to an adjacent edge.

disability: 6.2e. a condition, such as a physical or mental handicap, that results in partial or complete loss of a person's ability to perform certain chess activities.

draw: 5.2. Where the game is concluded with neither side winning.

draw offer: 9.1.b. Where a player may offer a draw to the opponent. This is indicated on the scoresheet with the symbol (=).

elapsed time: 6.7b. The time between the start of the round and the arrival of a player.

en passant: 3.7d. See that article for an explanation. In notation e.p.

exchange: **1.** Where a player captures a piece of the same value as his own and this piece is recaptured. Or **2.** Where one player has lost a rook and the other has lost a bishop or knight.

explanation: 12.9. A player is entitled to have a Law explained.

file: 2.4. a vertical column of eight squares on the chessboard.

Fischer mode: See cumulative mode.

flag: 6.1. The device that displays when a time period has expired.

flag fall: 6.1. Where the allotted time of a player has expired.

handicap: See disability.

I adjust: See j'adoube.

impairment: See disability.

j'adoube: 4.2. Giving notice that the player wishes to adjust a piece, but not necessarily intend to move it.

kingside: 3.8b. The vertical half of the board on which the king stands at the start of the game.

illegal: 4.3c. A position or move that is impossible because of the Laws of Chess.

made: 1.1. A move is said to have been "made" when the piece has been moved to its new square, the hand quit the piece and the captured piece, if any, removed from the board.

mate: Abbreviation of checkmate.

minor piece. Bishop or knight.

mobile phone: 12.3b. cellphone.

monitor: 6.13. An electronic display of the position on the board.

move: 1.1. **1.** 40 moves in 90 minutes, refers to 40 moves by each player. Or **2.** having the move refers to the player's right to play next. Or **3.** White's best move refers to the single move by white.

move counter: 6.10b. A device on a chessclock which may be used to record the number of times the clock has been pressed by each player.

normal means: 10.2b. Playing in a positive manner to try to win; or, having a position such that there is a realistic chance of winning the game other than just flag fall.

opponent: 1.1. The person who is waiting for the player to move.

organiser. 13.9h. The person responsible for such as the venue, dates, prize money, invitations, format of the event and so on.

over-the-board: introduction. The Laws cover only this type of chess, not internet, nor correspondence, etc.

penalties: 13.9. The arbiter may apply penalties as listed in 13.9 in ascending order of severity.

piece: 2. **1.** One of the 32 figurines on the board. Or **2.** A queen, rook, bishop or knight.

player: 1.1. The person whose turn it is to move.

playing area: 12.2. The place where the games of an event are played.

playing venue: 12.2. The only place to which the players have access during play.

points: 11.1. Normally a player scores 1 point for a win, ½ point for a draw, 0 for a loss. An alternative is 3 for a win, 1 for a draw, 0 for a loss.

press the clock: 6.7a. The act of pushing the button or lever on a chess clock which stops the player's clock and starts that of his opponent.

promotion: 3.7e. Where a pawn reaches the eighth rank and is replaced by a new queen, rook, bishop or knight of the same colour.

queen: as in queen a pawn, meaning to promote a pawn to a queen.

queenside: 3.8b. The vertical half of the board on which the queen stands at the start of the game.

quickplay finish: The last part of a game where a player must make an unlimited number of moves in a finite time.

rank: 2.4. A horizontal column of eight squares on the chessboard.

rapidplay: A. A game where each player's thinking time is at least 10 minutes, but less than 60.

repetition: 5.2.d. A player may claim a draw if the same position occurs three times.

resigns: 5.1b. Where a player gives up, rather than play to mate.

rest rooms: 12.2. Toilets, also the room set aside in World Championships where the players can relax.

result: 8.7. Usually the result is 1-0, 0-1 or ½-½. In exceptional circumstances both players may lose (Article 12.9), or one score ½ and the other 0 (Article 12.3b). For unplayed games the scores are indicated by +/- (White wins by forfeit), -/+ (Black wins by forfeit), -/- (Both players lose by forfeit).

rules of the competition: 6.6b. At various points in the Laws there are options. The competition rules must state which have been chosen.

sealed move: Guidelines for adjournment. Where a game is adjourned the player seals his next move in an envelope.

scoresheet: 8.1. A paper sheet with spaces for writing the moves. This can also be electronic.

spectators: Non-players viewing the games. This includes players after their games have been concluded.

screen: 6.14. An electronic display of the position on the board.

stalemate: 5.2a. Where the player has no legal move and his king is not in check.

time control: 1. The regulation about the time the player is allotted. For example, 40 moves in 90 minutes, all the moves in 30 minutes, plus 30 seconds cumulatively from move 1. **Or** 2. A player is said "to have reached the time control", if, for example he has made the 40 moves in less than 90 minutes.

time period: A part of the game where the players must complete a number of moves, or all the moves in a certain time.

touch move: 4.3. If a player touches a piece with the intention of moving it, he is obliged to move it.

white: 2.2. **1.** There are 16 light coloured pieces or squares called white. **Or 2.** When capitalised, this also refers to the player of the white pieces.

zero tolerance: 6.6a. Where a player must arrive at the chessboard before the start of the session.

50 move rule: 5.2e. A player may claim a draw if at least the last 50 moves have been made without a capture or pawn move.