



FIDE WORLD CADET CHESS CHAMPIONSHIPS 2025
ALMATY, KAZAKHSTAN
SEPTEMBER 18 - OCTOBER 01, 2025
INVITATION

1. INVITATION

The organizers, International Chess Federation FIDE and the Kazakhstan Chess Federation and the Department of Sports of the City of Almaty with the support of the Ministry of Sports and Tourism of the Republic of Kazakhstan are inviting all national chess federations of FIDE to participate in the World Cadet Chess Championships 2025. The dates are 18 September (arrivals) to 01 October 2025 (departures).



2. PARTICIPATION

- 2.1. **Every National Federation can register one official player in each category** (under 8, 10, 12 years old, open and girls). This total of six (6) Official Players **plus one Accompanying Official, hereafter referred to as Head of Delegation**, (captain/trainer with a valid FIDE ID) belonging to the national federation are invited by the Organizers. A player must not have reached his/her 8th, 10th, or 12th birthday, respectively, before 1st January 2025.
- 2.2. **The players placed 1-3 in the previous U8, U10, and U12 World Cadet Championships, the respective Champions (1st ranked) of the last Continental Cadet Championships, and the players placed 1-3 in the FIDE World Cup for young chess players of the same year** in the World Cadet Championships of the corresponding age-category or a higher age-category if the age stipulation of Art. 2.1 above is met. Such players shall also be classified as Official Players and have to be registered by the national federation.
- 2.3. **Local players may participate in accordance with [the internal regulations](#) approved by the Kazakhstan Chess Federation.**
- 2.4. Players, other than Official Players, shall be classified as Additional Players. All other persons, other than players or the Accompanying Officials, shall be classified as Accompanying Persons. Each National Federation shall be responsible for all the costs of their Additional Players and Accompanying Persons.
- 2.5. If a participating Federation does not send an invited player in any age category, they cannot substitute him/her with another age-category player.
- 2.6. In order to provide appropriate tournament conditions, **the Federations must complete the official registration form and submit it to the Organizers by 01 July 2025.** After this deadline, the official players cannot be registered as invited players. Further participants may not be accepted, or an additional fee of 80 € (euros) may be requested according to the FIDE regulations.
- 2.7. In the absence of both parents or legal guardians, the child or adolescent must be accompanied by a responsible adult who presents a signed letter of authorization permitting them to accompany and care for the minor during the tournament.

3. FIDE ENTRY FEES

- 3.1. In accordance with FIDE regulations, **a FIDE entry fee of 70 € for the first player in each category** from each federation should be paid before the start of the tournament. **For each additional player from each Federation, a fee of 140 € should be paid before the start of the tournament.**
- 3.2. The National Federations must send this amount directly to the FIDE bank account or FIDE will charge the respective National Federation account. The Organizing Committee is not responsible for the FIDE entry fee and should not receive such sums from the National Federations.

4. REGISTRATION AND TRAVEL

- 4.1. **Each player (official or additional) and each accompanying person/official must pay to the Organizers the amount of 120 € at the moment of their registration no later than 01 July 2025.** This registration fee is compulsory and represents a confirmation of participation otherwise registration will be invalid and will not be accepted.
- 4.2. Players, accompanying officials, and additional persons upon paying the registration fee will receive:
 - Registration;
 - Accreditation with personalized badge (players and Heads of delegation);
 - Welcome bag (players and Heads of delegation);
 - Admission to the opening and closing ceremonies;
 - Water during games (players).
- 4.3. Transfers for players, accompanying officials and additional persons from Almaty International Airport to

the hotels are **free on official arrival (18 September) and departure (01 October) days**. Transfer from the organizers on other dates are possible upon request with an extra charge.

- 4.4. Players who make private transport arrangements will be fully responsible for any problems they experience during arrival or departure.
- 4.5. **Click the link to download the [Registration form](#)**
- 4.6. **The deadline for registration is 01 July 2025.** After this date, organizers reserve the right to refuse or decline late registrations or, if there is availability, a penalty for each late registration will be charged to participants.
- 4.7. The deadline is valid in terms of registration, hotel booking and transportation requests (both ways). If a National Federation fails to book and communicate the travel details of its delegation, the Organizing Committee will automatically be considered relieved of all responsibility.
- 4.8. After the Registration, accommodation & travel form has been filled in, sent to the organizer and approved by the organizer, the national federations will receive invoices for bank payments. The invoices will contain all the necessary details for the bank payment.
- 4.9. All the travel expenses must be paid by the National Federation. The Organizing Committee is not responsible for such expenses.
- 4.10. It is the responsibility of all National Federations to strictly adhere to the deadlines to ensure proper event organization and efficient management of participation.

5. FIDE TECHNICAL OFFICIALS

- 5.1. The Chief Arbiter will be announced in due time.
- 5.2. FIDE Technical Delegate will be announced in due time.

6. OTHER REGULATIONS

According to FIDE Rules

Electronic Devices, Wrist Watches & Pens: Mobile phones, electronic devices, and any other radio frequency source (except for medical purposes upon authorization provided by the CA), wristwatches (all types of wristwatches), and personal pens are prohibited inside the tournament hall.

7. INFORMATION ABOUT VISAS

- 7.1. **Those who need visas must submit their data by 01 July 2025.**
- 7.2. To proceed with the visa application, each federation must:
 - fill out the registration form and send it via official email it to the organizing committee along with PDF scans of the participants' passports, which must be valid for more than six months
 - Proceed with the payment of the registration fee as it will be communicated by the organizing committee
 - at the same time as registering for the tournament, proceed with the reservation and payment of the hotel stay (if there are fees)
- 7.3. The Organizers will provide VISA assistance according to National laws only after all the pre-payments are made.
- 7.4. The Organizers are not responsible in case the Kazakhstan Consular authorities decline to issue the VISA due to public order and/or failing to meet all the requirements to obtain VISA.

8. PAYMENTS

- 8.1. **Entries must be submitted through the registration forms by 01 July 2025.**
- 8.2. **30% prepayment of the cost for board and lodging shall be paid through the organizer invoices by 01 July 2025**
- 8.3. **All payments must be finalized by 18 August 2025.** Players will not be paired until 100% total payments are transferred to the Organizers.
- 8.4. **Only National Federations are entitled to issue payments to the Organizing Committee.** Private payments will not be accepted and/or considered valid.
- 8.5. **Entry Fees for late registration, withdrawal, or no-show shall be charged as follows as per FIDE Regulations <https://handbook.fide.com/chapter/D0401202312> .**
- 8.6. Withdrawal after submission of registration:
- (30 to 60 days before the start of the competition) – 75% refund of the person's total paid to the organizer.
 - (15 to 30 days before the start of the competition) – 50% refund of the person's total paid to the organizer.
 - (1 to 15 days before the start of the competition) – 25% refund of the person's total paid to the organizer.
 - Withdrawal after the pairings for Round 1 are published – no refund
- 8.7. FIDE is entitled to coordinate the refund process in case of extraordinary situations (pandemics, wars, natural disasters, and similar significant reasons) when it concerns a large number of registered people - at least 1/10 or minimum of 50 registered participants, including accompanying people or affects one national federation that cannot participate for reasons that FIDE will confirm as valid. In this case, FIDE approves the final refund amount for all such players, and this amount is mandatory for the organizer. The organizer has the right to submit its arguments on this issue to FIDE before making a final decision.
- 8.8. If any FIDE federation is expected to miss the registration deadline for reasons/circumstances beyond their control, they shall approach EVE before the registration deadline. EVE shall investigate the case, and attempt to work with the organizer to find a solution.
- 8.9. **Each National Federation will be invoiced by the organizers. Upon payments confirmed, the Organizers will send to the Federations the confirmation of the hotel bookings.** As soon as the FIDE officials are appointed and the registrations are confirmed, registered players will then appear on the official website and ChessResults, where players' statuses may be checked on a daily basis.
- 8.10. National federations unable to fulfill payment obligations through bank transfer must request authorization from both the Organizing Committee and the FIDE Events Commission before the deadline (01 July 2025). Such requests will be evaluated on a case-by-case basis, taking into consideration the circumstances and reasons provided by the concerned federation. Approval for alternative payment methods will be granted only under exceptional circumstances and at the discretion of the Organizing Committee and the FIDE Events Commission. Federations must provide compelling reasons for their inability to make payments via bank transfer, along with a feasible alternative proposal for fulfilling their financial obligations.
- 8.11. National Federations are responsible for paying the Organizing Committee the fees as communicated. Any bank charges or for transferring the amounts will be charged to the National Federations prior to the event or directly with the Head of Delegation on site (8.10).

9. VENUE, OFFICIAL HOTELS - BOARD & LODGING

9. 1. The venue of the event is **Sports Cultural Complex - "Baluan Sholaq Arena" (44 Abay ave., Almaty)**
9. 2. The official hotels of the event and rates are, per person per day with full board, 3 meals/ day with open buffet and water in rooms. **Bookings must be done only through the organizer.**

Hotel	Number of rooms	Single (1 person)	Twin (2 persons)	Triple (3 persons)	Family (4 persons)	Distance
RAHAT PALACE 5*	83	135€	120€	110€	n/a	1,5 km
KAZAKHSTAN 4*	247	130€	120€	110€	100€	3 km
ALMATY HOTEL 4*	144	125€	115€	100€	95€	2,5 km
RAMADA BY WYNDHAM ALMATY 4*	65	120€	110€	95€	90€	2,5 km
RESIDENT ABAY 4*	90	115€	105€	90€	n/a	2 km
BEST WESTERN PLUS ATAKENT 4*	90	110€	100€	90€	85€	3 km
HOLIDAY INN EXPRESS 3*	115	105€	95€	85€	n/a	1 km

- 9.3. **Official players and Official Head of Delegation, as per point 2.1 and 2.2 of the regulations, are offered free full board accommodation only from 18 September (official arrival day, lunch) to 01 October (official departure day, breakfast).** Check-in time not before 15:00 (local time), check-out time before 12:00 (local time). Early check-in/check-out time must be required beforehand.
- 9.4. As per FIDE regulations all invited players are entitled to **free lodging in a shared double room**. Upgrades (to a single room) won't be possible due to the age of participants. Special requests for downgrades (from double room to triple/family room) must be required beforehand.
- 9.5. FIDE officials will be offered full board accommodation in a 5* hotel.
- 9.6. **As per FIDE regulations, all players and accompanying persons must be accredited and stay at the official hotels of the event.** Bookings and accreditation are possible only through the procedure described in articles 8.1 to 8.4 above.
9. 7. **Requests will be processed on a first-come, first-served basis.**
9. 8. The final distribution of hotel rooms will be decided by the Organizing Committee. If needed, the Organizers reserve the right to include an additional official hotel of no less than 4* category.
9. 9. The above-mentioned prices are also understood to be valid on the two days before and after the event to ensure the same conditions for participants and their accompanying people. Full board meal conditions will depend on the number of participants staying at the official hotel.

10. TECHNICAL REGULATIONS

10. 1. The tournament will be played using the Swiss System with 11 rounds. The national rankings will not be taken into account for pairings. The rate of play will be in accordance with the FIDE rules: 90 minutes plus an addition of 30 seconds per move starting from move one. The default time is 30 minutes.
10. 2. Tie break criteria:
- a) the games between the tied players (only if all tied have played each other),
 - b) Buchholz cut 1,
 - c) Buchholz,
 - d) Sonneborg,
 - e) the greater number of wins,
 - f) Average Rating of Opponents ARO

Direct titles available to winners subject to rating criteria Direct Titles are awarded according to FIDE regulations in force: <https://handbook.fide.com/chapter/B01DirectTitles2017>

10. 3. FIDE over-the-board title norms are also possible for the other players based on their performance and their opponent's titles/ratings as per FIDE Handbook requirements.

10. 4. FIDE Anti Cheating Measures and guidelines are in effect during the championship.

11. APPEALS & APPEALS COMMITTEE

11. 1. Protests against decisions of the Chief Arbiter or his assistants must be submitted in written form to the Chairman of the appeals committee within 30 minutes after the completion of the respective game. The protest must be accompanied by the sum of 200 € as a deposit from the signatory. The deposit must be handed to the Chairman of the appeals committee. If the appeal is granted, the sum shall be returned immediately. If the appeal is refused, the deposit may be forfeited to FIDE.

11. 2. The Appeals Committee will be announced in due time.

12. TOURNAMENT SCHEDULE

DAY	TIME	EVENT
18 September	all day	Arrival Day
	19:00	Technical meeting
19 September	14:00 - 15:00	Opening ceremony
	15:00	1st round
20 September	15:00	2nd round
21 September	15:00	3rd round
22 September	15:00	4th round
23 September	15:00	5th round
24 September	15:00	6th round
25 September	all day	Rest Day with Activities
26 September	15:00	7th round
27 September	15:00	8th round
28 September	15:00	9th round
29 September	15:00	10th round
30 September	11:00	11th round
	17:00*	Closing Ceremony
01 October	all day	Departure Day

*The closing ceremony might be delayed depending on the end of the last round

13. SAFETY

All delegations should abide by specific security regulations. Each National Federation shall be responsible for their delegations including damages to property.

14. TOURNAMENT PRESS RELEASES AND INFORMATION

Press releases, photos, highlight videos, a selection of games in pgn format, and general information will be provided on a daily basis through the Telegram Channel and official website.

15. PRIZES

15. 1. The three best players in each tournament will receive a trophy and a medal. All players will receive diplomas of participation.
15. 2. **Prize fund 20.000 Euros in goods** (Chess, technology, and educational gifts to the top 3 ranked of each category)
15. 3. The three best Federations, by ranking of medals collected in all categories, will receive a trophy.
For first place, the number of gold medals will be taken into consideration,
If there is a tie, then the number of silver medals will be taken into consideration
If there is still a tie, then the number of bronze medals will be taken into consideration.
If there is still a tie, then the total points of medalists will be taken for a tiebreak
Finally, if this is still equal, then the average performance rating of the medalists from each country will be taken into consideration.

16. PARALLEL ACTIVITIES

16. 1. According to FIDE Guidelines, a side program will include seminars for FIDE Arbiters which will be announced in due time.
16. 2. On the rest day, participants will enjoy an excursion to picturesque locations around Almaty. The program will also feature a blitz tournament with a prize fund of 2,000 Euros, along with a variety of cultural and sports activities.

17. CONTACT

Tournament Director	Darmen Sadvakasov
Organizer	IO Gulmira Dauletova
Official website	https://worldcadet2025.fide.com
Official email	worldcadet@fide.com
In case in emergency	+7 778 101 60 43

Annex 1
FIDE Regulations:

Appeals Committee Procedural Rules:

<https://handbook.fide.com/chapter/AppealsCommitteeProceduralRules>

Fair Play Commission Procedural Rules:

<https://fpl.fide.com/wp-content/uploads/2023/01/FPL-Procedural-Rules-Final-2022.pdf>

ACC Protection Measures:

<https://handbook.fide.com/files/handbook/ACCProtectionMeasures.pdf>

Regulations for the Appointment of Arbiters in World Events:

<https://handbook.fide.com/chapter/B0604082023>

Arbiter Stipend Regulations:

<https://handbook.fide.com/chapter/ArbiterStipendRegulations2024>

FIDE Laws of Chess:

<https://handbook.fide.com/chapter/E012023>

Captains and Heads of Delegations:

<https://handbook.fide.com/chapter/CaptainsHeadsDelegation>

FIDE Events Manual

https://oldevents.fide.com/wp-content/uploads/2019/09/Final-Manual_2016.pdf

FIDE Pairing Rules

<https://handbook.fide.com/chapter/C0403>

Olympiad Pairing Rules

<https://handbook.fide.com/chapter/OlympiadPairingRules2022>

Tie-Break Regulations

<https://handbook.fide.com/chapter/TieBreakRegulations2023>

Annex 2

World Cadet Chess Solving Championship Almaty, Kazakhstan, 25th September 2025

Regulations' summary

1. This competition will be organised on 25th September 2025, during the free day of the WCCC 2025, at the same six categories of age and gender as the over-the-board competitions:
 - U8 (same set of 6 problems for open and girls): 5 problems of mate in 2 moves, 1 endgame study;
 - U10 (same set of 6 problems for open and girls): 4 problems of mate in 2 moves, 1 problem of mate in 3 moves, 1 endgame study;
 - U12 (same set of 6 problems for open and girls): 4 problems of mate in 2 moves, 1 problem of mate in 3 moves, 1 endgame study.
2. For each category the time of 60 minutes is allotted for solving.
3. Participants are allowed to move pieces while solving. A solver may use the chess set(s) made available by the organiser, or his/her own set(s).
4. At the same number of points, the 1st tie-break will be the shorter time used for solving. The 2nd tie-break will be the younger age.
5. There will be separate standings for open and girls. If a girl wants to compete at the open, she has to announce this before the tournament.
6. The number of participants per country is not limited.
7. Even if the categories would not be scheduled at the same time, a participant can compete in one category only.
8. A solver may leave solving hall only after finishing solving and handing in his solving sheet.
9. The use of all electronic or technological aids which can help in solving is forbidden, as well as any other kind of unfair behaviour.
10. The solutions are to be written in algebraic notation. It is not acceptable to do it by drawing arrows on diagrams, instead of writing the moves.
11. A detailed set of regulations and instructions for the solvers may be found in another file will be published on the official site in due time.
12. Participation fee: 25 €

Additional info: Marjan KOVAČEVIĆ - WFCC President +381621792972 Email:
president@wfcc.ch

Instructions about writing solutions

Each solution starts with a move of White.

Participants are allowed to move pieces on the board while solving.

For two-movers, only the first move of White is written.

For three-movers, one should write the first move, the threat (if any), all black defences and the second move of White. Writing only the first move of White is not enough for getting any point. It is not necessary to list short variations, in which white mates in 2 instead of 3 moves.

In studies, all moves are written until there is a clear win or a draw, depending on what is required in the study.

Each problem carries 5 points. In two-movers, only the first move is scored. In three-movers, threat (if any) and all variations are scored. In studies, only white moves are scored; the closer you get to the final position, the more points you get. Only one, the main variation is scored.

We hope that the illustrative examples at the end of this text will make these instructions more understandable.

Classical, abbreviated notation is used. Each participant may use as symbol for a given piece, the initial letter of the name of that piece in his (her) own language, or other language at his (her) choice. Drawing arrows instead of writing will not be acceptable. There will be a field on the answers sheet where he (she) can specify which symbol he (she) is using for each piece.

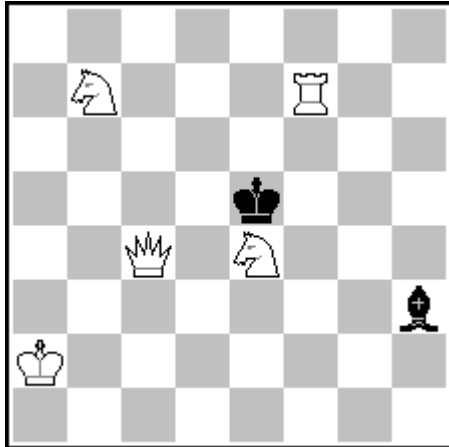
If two pieces of the same type can come to the same square, it is important to indicate which of the two is in question.

The problems do not have to be solved in order. If someone thinks he (she) has finished before the time is up, he (she) can hand over the sheet with answers, and he (she) will be told how much time has passed.

Time is the first tie-breaker. So, if two solvers have the same number of points, the one who spent less time has the better placement, and if time also is even, the younger competitor will have the advantage.

ILLUSTRATIVE EXAMPLES

1



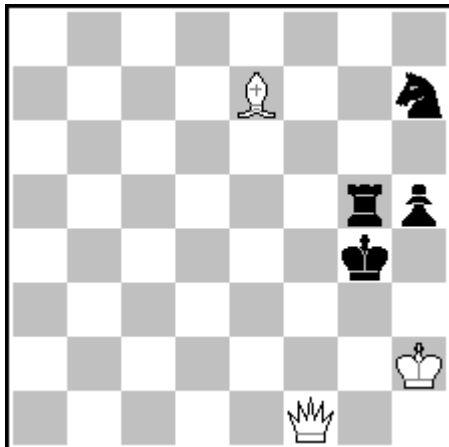
#2 (White to play and mate in 2 moves)

Solution:

1.Nbc5 (5)

Here, a correct first move of White brings all 5 points. 1.Nc5 is incorrect, because it is not indicated which Knight moves.

2



#3 (White to play and mate in 3 moves)

Solution:

1.Kg2 threat 2.Qf3+ (1.25)

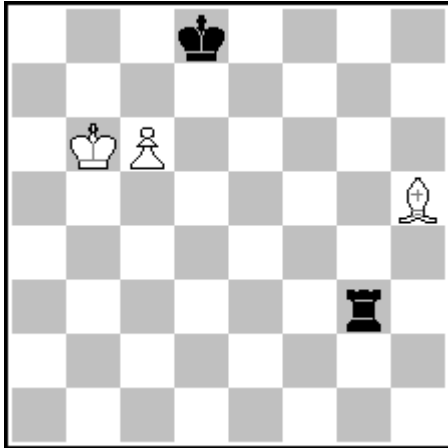
1...Kh4+ 2.Kf3 (1.25)

1...Nf6 2.Qxf6 (1.25)

1...Rf5 2.Qd1+ (1.25)

The solution written this way to this problem brings all 5 points. Threat and each variation carry 1.25 points each.

3



+ (White to play and win)

Solution:

**1.c7+ (1) Kd7 2.Be8+ (1) Kc8 3.Bf7 (1)
Re3 4.Bc4 (1) Re8 5.Kc6 (1)**

This is clearly the main variation of the study and the only one that is scored, and here every move by White would carry 1 point. Sometimes longer sequences are needed to get points.

Not always it is absolutely clear which variation is the main variation, so it is advisable, in these cases, to write all the variations the solver consider to be relevant.